

Destination: Aviation History



Introduction:

Phoenix Sky Harbor International Airport highlights aviation history everywhere, even across the valley. Whether you are traveling or just visiting the airport, a history experience awaits. Refer to this Guide to discover various aspects of Sky Harbor's beginnings throughout Terminals 3 and 4, the Rental Car Center, Deer Valley and Goodyear Airports. Here's a sampling of what you can see:

Terminals 3 & 4:

- Diversify your aviation history knowledge with pop-up exhibitions, and *Fly Back In Time* displays that dive into the history of Sky Harbor (T4, Level 3).
- Discover how couples became newlyweds on the airport's premises, and learn about the dedication of Terminal 3 to one of Arizona's public servants. (T3, Level 1, south side).

Rental Car Center:

- Explore the exhibitions celebrating the once standing mid-century modern Terminal 2, and the making of a 75-foot long mural (Level 3, west side).

Deer Valley Airport:

- Learn about all the hands that go into making an airport successful through the exhibition *At Your Service*. Don't forget to visit the Observation Deck. You might get to watch a plane land or takeoff.

Goodyear Airport:

- Enjoy the exhibition on view *Rivets, Radials, Runways* that highlights the history of Phoenix Goodyear Airport.

The **Phoenix Airport Museum** is one of the largest and oldest airport art and aviation history programs in the country. The Museum showcases Arizona's artistic and cultural heritage, enhancing visitors' experiences in Sky Harbor's Terminals, Rental Car Center, Deer Valley and Goodyear Airport.



City of Phoenix Aviation Department | skyharbor.com/museum
For more information about the Phoenix Airport Museum call 602-273-2744.

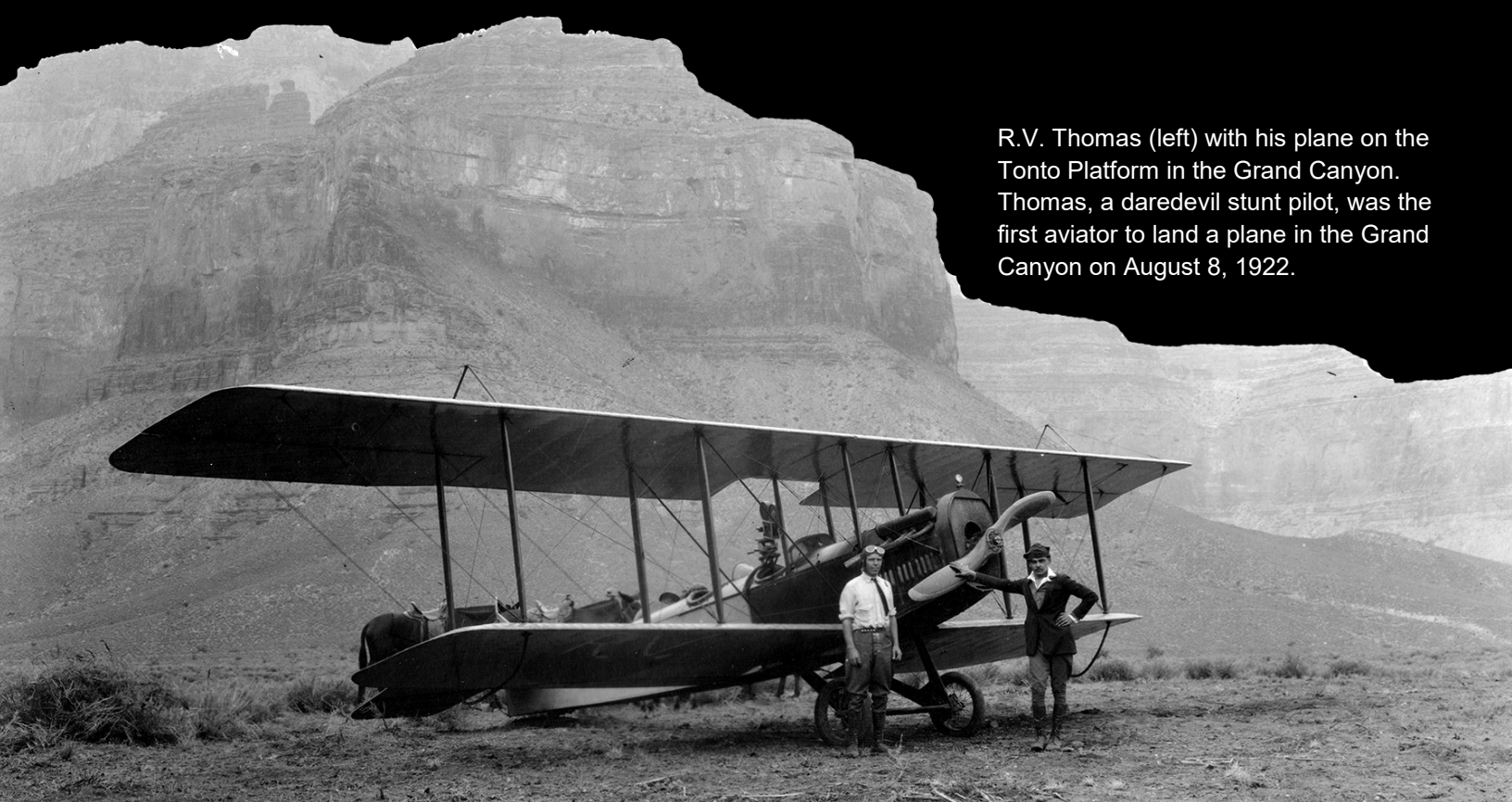
**PHOENIX
AIRPORT
MUSEUM**

Are you ready to fly back in time?

Suggested itinerary:

- Begin your Aviation History Tour at **Terminal 4**. Stop by the pop-up exhibition in the center of level 3, then venture over to the Sky Train arrival areas on both east and west ends to check out the *Fly Back In Time* photo displays.
- Board the PHX Sky Train to **Terminal 3**. Go down to level 1 and enjoy the *Historic Fly-In Weddings* exhibition next to the display that delves into the terminal's modernization.
- Hop back on the PHX Sky Train and ride to the **44th Street Station** where you'll be greeted by a WWI biplane.
- If you're feeling extra adventurous, drive to the **Deer Valley Airport** to explore the exhibition on display, and catch the grand views on the Observation Deck.
- End your aviation history experience at the **Goodyear Airport** with the *Rivets, Radials, and Runways* exhibition and learn about the airport's long history of military service.

Need a map? Find them [here](#).



R.V. Thomas (left) with his plane on the Tonto Platform in the Grand Canyon. Thomas, a daredevil stunt pilot, was the first aviator to land a plane in the Grand Canyon on August 8, 1922.



Former Sky Harbor Assistant Director, Doug Carr, pointing out the details of a Douglas DC-3 to a group of school children, 1950s.

Terminal 4

Fly Back in Time

Historic image displays located on level 3

Learn about Sky Harbor's historic beginnings through a quick stop at the *Fly Back in Time* image displays. **Find them all:**

- Sky Train Arrival Area East End
- Sky Train Arrival Area West End
- Adjacent to gallery in center of level
- West of food court in center of level

Trans World Airlines (TWA)
Constellation, "Connie," late 1940s.

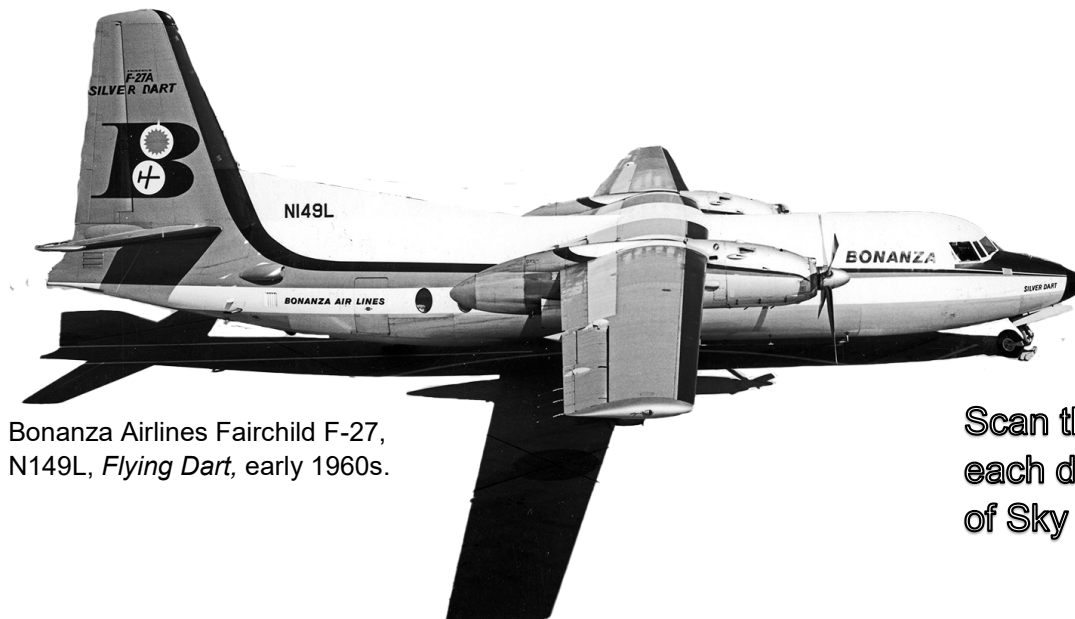


East End

Fly back to the 1930s-1940s for a unique view of what was once Sky Harbor's North Terminal. Meet the aircraft that first introduced and standardized safe, reliable and comfortable air travel, catch a glimpse of the Wedding Chapel that once married couples just off the runway, and admire an iconic aircraft nicknamed "Connie."

West End

Board a plane to the 1950s-1980s for a birds-eye view of what was once Sky Harbor's Terminal 2. Learn about the aircraft most responsible for ushering in the age of modern commercial air travel while beholding the iconic control tower, and find out about the beginnings of Bonanza Airlines.



Bonanza Airlines Fairchild F-27,
N149L, *Flying Dart*, early 1960s.

Scan the QR Code located at
each display to explore more
of Sky Harbor's history.

The Worlds Largest Airline

American Airlines Exhibition located on level 3 center



Left - American Airlines "Flagship" Ticket Jacket design 1943.

Check out this pop-up history exhibition that pays homage to the airline that made commercial air travel profitable in the 1930s with their Douglas DC-3 passenger planes, known as *Flagships*. These aircraft outfitted with sleeper berths, comfortable seating and luxuries such as drawing rooms, lavatories and fine dining brought an air of exclusivity to commercial air service.

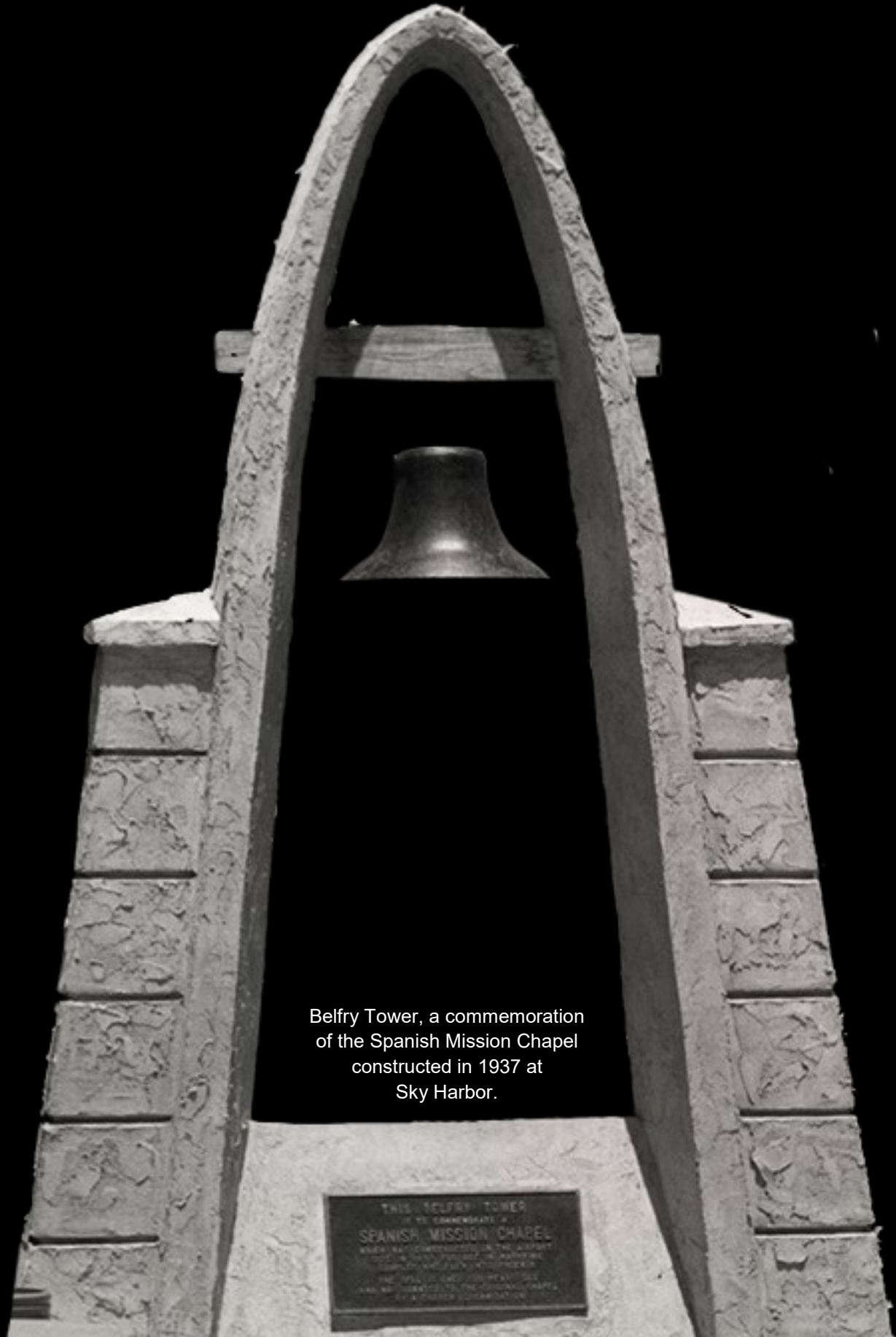
View a cloth pennant from *Flagship Arizona* that traveled millions of miles around the globe. See aircraft-shaped utensils that diners ate their meals with aboard the *Flagship*.

Have a patriotic look at vintage American Airlines stewardess uniforms from the 1960s that are not only modern and stylish, but as American as red, white and blue. Don't forget to take a picture with a life-size image of stewardesses from a previous era.

Scan the QR Code located at this display to learn more about flight attendant training in the 1950s.



Terminal 3



Belfry Tower, a commemoration
of the Spanish Mission Chapel
constructed in 1937 at
Sky Harbor.

THIS BELFRY TOWER
IS A COMMEMORATION OF
SPANISH MISSION CHAPEL
WHICH WAS CONSTRUCTED IN THE YEAR
1937 AT SKY HARBOR, PHOENIX, ARIZONA
AND WAS DESIGNED BY ARCHITECT
FRANCIS W. WATSON AND
ERECTED BY THE PHOENIX CHAPTER
OF THE BELL FOUNDATION

Historic Fly-In Weddings

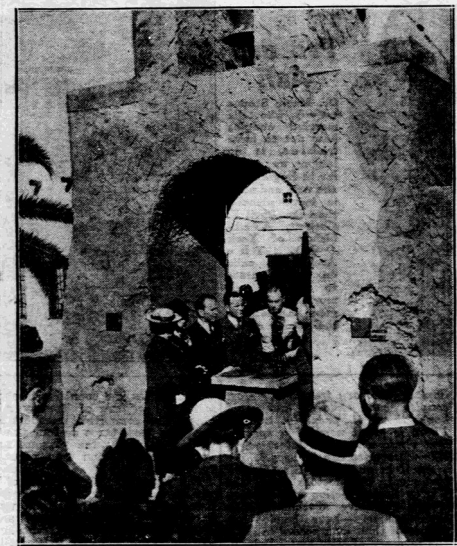
Pop-up Exhibit on level 1, south side

An open-air chapel for aerial elopers?

Before Las Vegas gained a reputation for quick weddings, Phoenix's own Sky Harbor set an example for elopement—Arizona style. While weddings are now prohibited at the airport due to operational concerns, this has not always been the case. The airport was once home to innovative fly-in concepts, one of them being a wedding chapel conceived in the late 1930s by the Phoenix Junior Chamber of Commerce. Unlike California, Arizona did not have a legal waiting period to get married, offering an alluring destination for elopers and the swift opportunity to get married minutes after landing.

Couples would eagerly stand under an archway constructed as an open-air, Spanish-style adobe chapel located just off the runway. A bell tower topped with wooden cross held a large 100-year-old bell that originally hung in a Phoenix church. While it did not entice many Hollywood celebrities for speedy, discreet weddings like the airport had hoped, local residents frequently wed there. Officials performed 42 wedding ceremonies before the chapel closed in the 1940s.

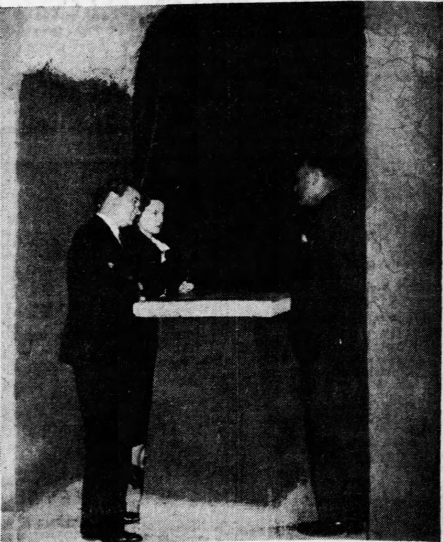
Learn more about Sky Harbor's wedding chapel by visiting the exhibition in Terminal 3, and see the original chapel bell on display, which is now nearly 200 years old.



Elopement—Arizona Style

This Sky Harbor Airport chapel at Phoenix catches aerial elopers from points east and west. A crowd looks on while one couple has the knot tied amid Arizona sunshine, adobe, microphones and applause.

Chapel Christened



WED IN SKY HARBOR CHAPEL

Picturesque chapel and "marriage altar" was completed recently at Sky Harbor airport here to attract aerial elopers, especially from California. But first to take their vows there—Daniel C. Scarborough, Chicago, and Phyllis K. Dalby, Paterson, N. J.—arrived and departed by auto. Scarborough cocks his head; listens attentively as Harry E. Westfall, justice of the peace, performs the ceremony.

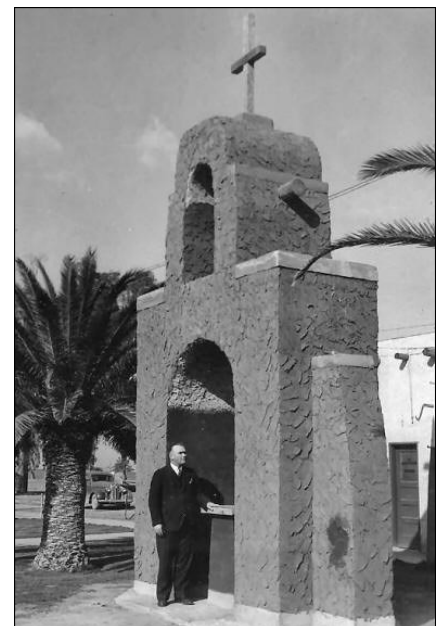
Groom Kisses Bride After Airport Rites



There was a "smack" as the camera shutter clicked a moment after Harry E. Westfall, justice of peace, said "I now pronounce you husband and wife" and the above photo shows Donald Davis, radio singer, as he kissed his bride, the former Miss Dorothy Branchaw, at the conclusion of their wedding yesterday morning in the picturesque sky Harbor airport chapel. The couple came here by airplane from Los Angeles for the ceremony, which was featured in a special radio broadcast from the chapel—Republic Staff Photo.



An unidentified couple embrace in front of the chapel. The chapel's exterior stucco has eroded to reveal the handmade adobe bricks beneath, 1940s.



Chapel in 1937

A Moment of Modernization

Dedication display on level 1, south side

Stop by the display honoring the development of Terminal 3 and its transformation through the years. Terminal 3 was constructed in 1976 at a time when 4.4 million people were flying in and out of the airport annually. After it opened in 1979, passenger traffic grew to 7 million. The modernization effort of Terminal 3 in 2020 was a major renovation of the terminal's architecture that resulted in grand views, integrated art and a desert-themed sculpture garden.



Terminal 3, 2020

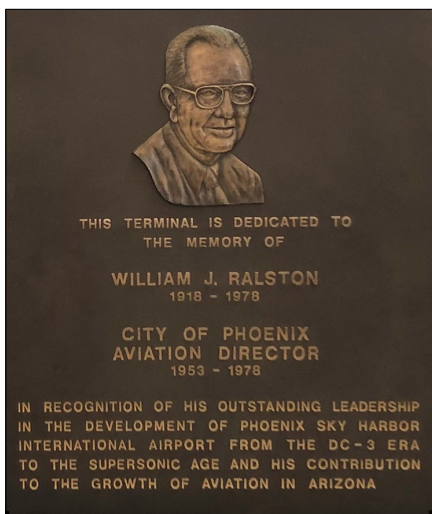


Terminal 3, 1976



Cindy McCain unveils the plaque honoring her husband, the late U.S. Sen. John McCain on Jan. 28, 2020.

Late U.S. Senator John McCain III's record of leadership embodies a lifetime commitment to service. Upon his death, he had served his country for sixty years. In 2017, Phoenix City Council voted to name the newly renovated Terminal 3 the *John S. McCain III Terminal 3*. Check out his bronze portrait plaque on view, created in the longtime U.S. Senator's honor.



Did you know?

Terminal 3 is dedicated in the memory of William J. Ralston (1918—1978), recognizing his leadership in the development of Sky Harbor airport and his contribution to the growth of aviation in Arizona. The bronze portrait plaque on view highlights Ralston's role as Aviation Director for 25 years.

Arizona's Notable Aviators

Arizona's Notable Aviators located post-security on the west end of level 4, tells the story of eight African Americans who have made a significant contribution to aviation in Arizona.

Upon visiting the exhibition, can you match the facts below with the aviator

★ First African American selected to fly in to the world-famous United States Air Force Thunderbirds, an air demonstration jet squadron.

★ First black woman to receive a commercial pilot's license in the USA and founded the Challenger Aero Club for African American pilots.

★ After receiving training on B-25 Mitchell bombers, they attended law school and became a judge in Tucson.

★ Member of the famed Tuskegee Airmen who later served on the Phoenix Aviation Advisory Board and played a pivotal role in preserving general aviation services.

★ Flew 70 combat missions and 356 combat tours, all before commanding the 4454th Fighter Squadron that flew F-4 Phantom jets.

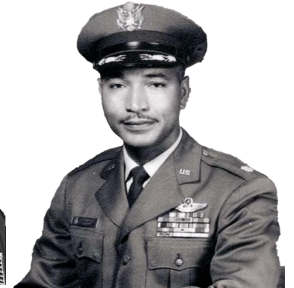
★ First black Squadron Commander at Luke Air Force Base in Arizona who provided advanced training for German pilots on jet aircraft.

★ Researched, built, and installed the first black aviator exhibit at the Pima Air and Space Museum in Tucson.

★ First black pilot and Tuskegee airman to work for a commercial airline, also helping to create the training program for the Boeing 747 aircraft.



Lloyd "Fig" Newton



Robert Ashby



Alfred J. Penn



Vernon Haywood



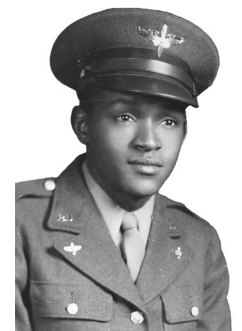
Asa D. Herring



Maurice D. Pompey



Janet Harmon Bragg



Lincoln J. Ragsdale



AIR AGE INC., 551 FIFTH AVE., NEW YORK 17, N.Y.
 SCALE: 1/4" = 1'-0"
 DATE:
 DRAWN BY: W. A. WYLLAM
 FUSELAGE & WING DETAILS
 FRENCH "S.P.A.D." FIGHTER
 S-XIII C.I.

44th Street PHX Sky Train Station

S-XIII C.I.
 DRAWN BY: W. A. WYLLAM

Fulfilling the Need for Speed

Display located in the 44th St Sky Train Station lobby



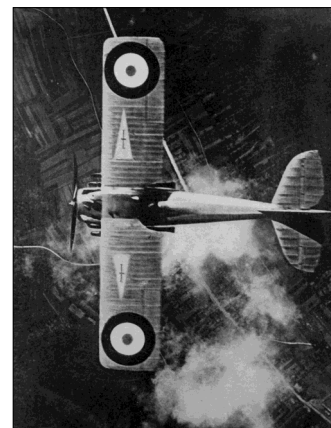
SPAD XIII, 1917—1919, wood, metal, fabric, 20' 4" long x 26' 4" wide x 7' 6" high

Sky Harbor's SPAD XIII Biplane

- The SPAD XIII on display is 80 percent original, pieced together from three different aircraft.
- It was restored by local company, GossHawk Unlimited, located in Casa Grande, with the original markings of the 27th squadron of the First Pursuit Group in which famous air hero Frank Luke Jr. was a member. Learn more about him on the next page.
- The aircraft was replicated with the exact colors taken from the 27th squadron's planes using color swatches and a French lettering style.

Look Up!

The 44th street PHX Sky Train Station holds an invaluable piece of history hanging from the rafters. The SPAD XIII is a French biplane fighter aircraft developed by the Société Pour L'Aviation et ses Dérivés (SPAD). Among one of the most successful fighter airplanes of World War I (1914-1918), this feisty aircraft fulfilled the need for more speed in the skies. With increasingly capable enemy fighters during the war, the SPAD became a competitive aircraft powered by a rare water-cooled Hispano-Suiza engine that allowed it to reach 138 miles per hour. An assortment of underbelly fuel tanks also facilitated its two hour endurance. Weighing 1810 pounds (loaded) with wooden frame and fabric covered wings and body, its robust construction and ability to dive at high speeds made it one of the best aerial combat airplanes of the war.



Aerial – down view of French SPAD

Did you know...?

You are looking at 1 of only 4 SPAD XIII's that remain. The SPAD prototype made its first flight on April 4, 1917, and by the end of 1918, French manufacturers had built 8,472.

Arizona's Balloon Buster

Diorama located in the 44th St Sky Train Station lobby



Portrait of Frank Luke Jr. by Robert T. McCall, 2008, Oil on canvas, 72" x 57"

The SPAD XIII aircraft was flown by some of the most famous air heroes of World War I (1914-1918), one of them being Phoenix native Frank Luke Jr. (1897-1918). Known for his rebellious and impulsive attitude, Luke became America's second highest scoring ace in the sky. He was assigned to the 27th Aero Squadron, part of the Army's 1st Pursuit Group and secured his place in history by bringing down 4 German aircraft and 14 observation balloons over a span of 18 days. On September 18th, 1918 and only 21 years of age, he scored five victories in less than 10 minutes, a testament to his courage in combat.

Luke was the first airman to posthumously receive the Medal of Honor, the U.S. government's highest and most prestigious military decoration that may be awarded, along with the Distinguished Flying Cross and the Italian War Cross. Given the nickname, "Arizona's Balloon Buster," the Luke Airforce Base in Phoenix is named after his honor.

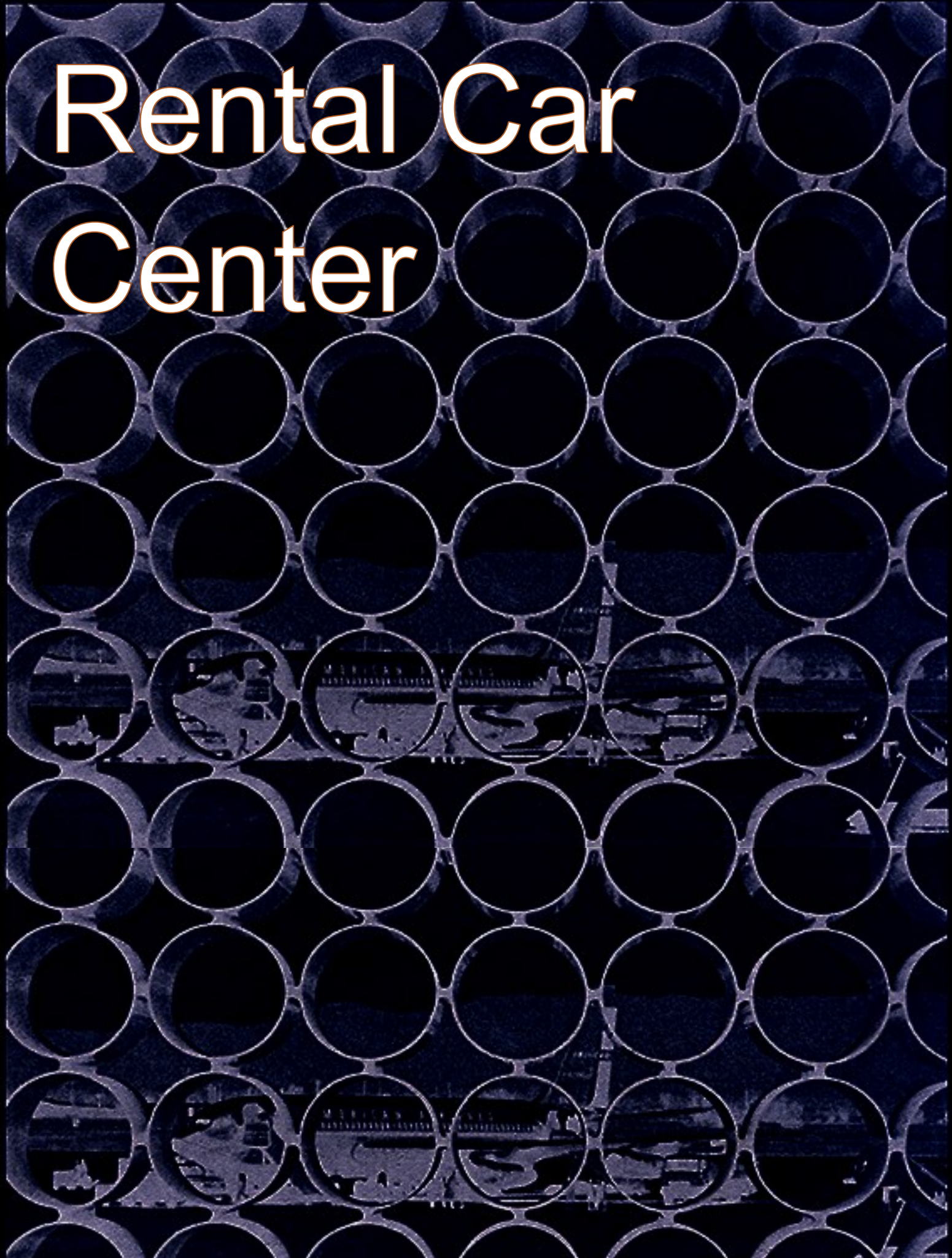
Before You Go...

Make sure to stop by the diorama depicting Lt. Frank Luke Jr.'s plane pursuing an enemy observation balloon.



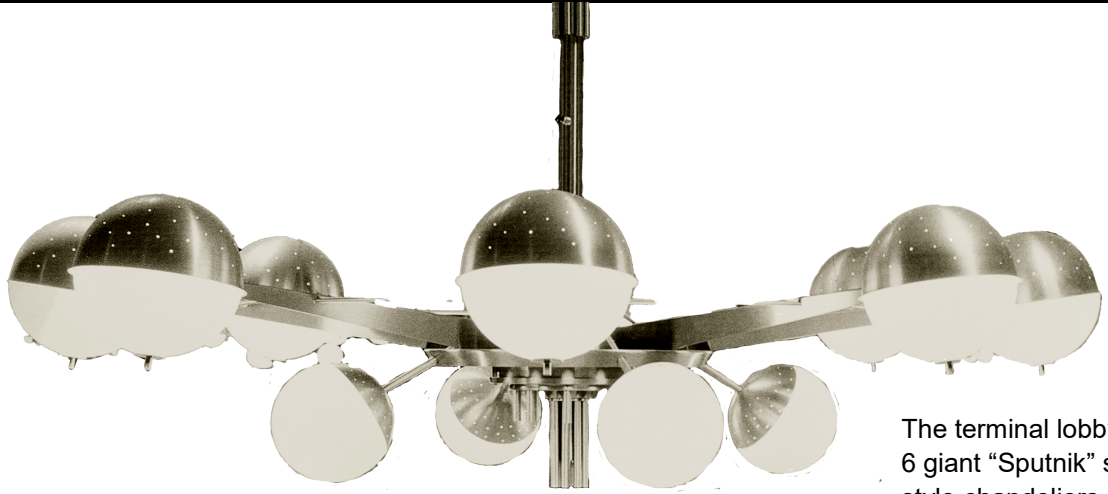
Lt. Frank Luke Jr. with his SPAD XIII fighter plane on September 19, 1918.

Rental Car Center



The Most Modern Air Terminal

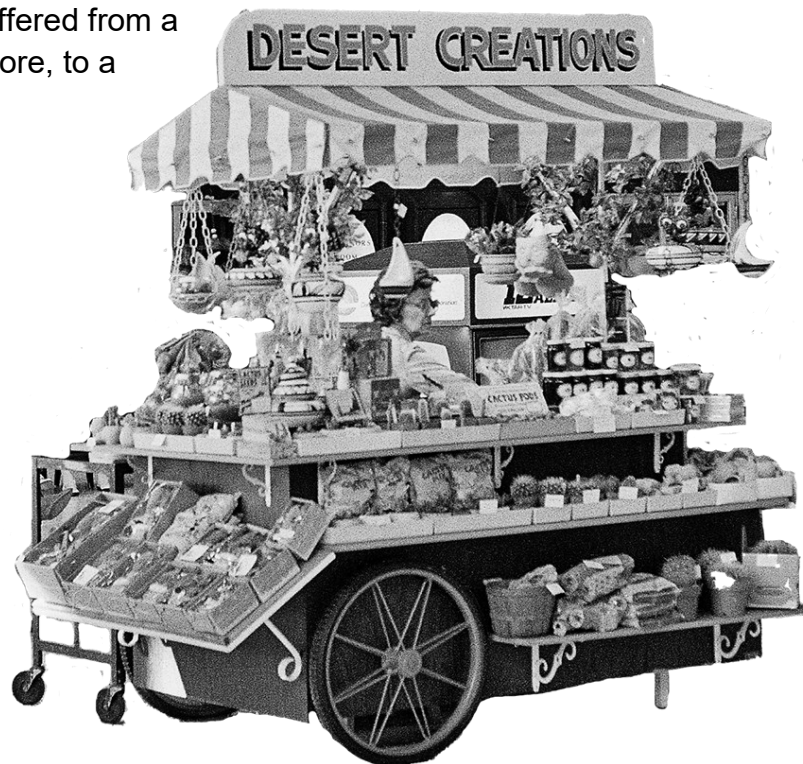
Display case exhibition, level 3



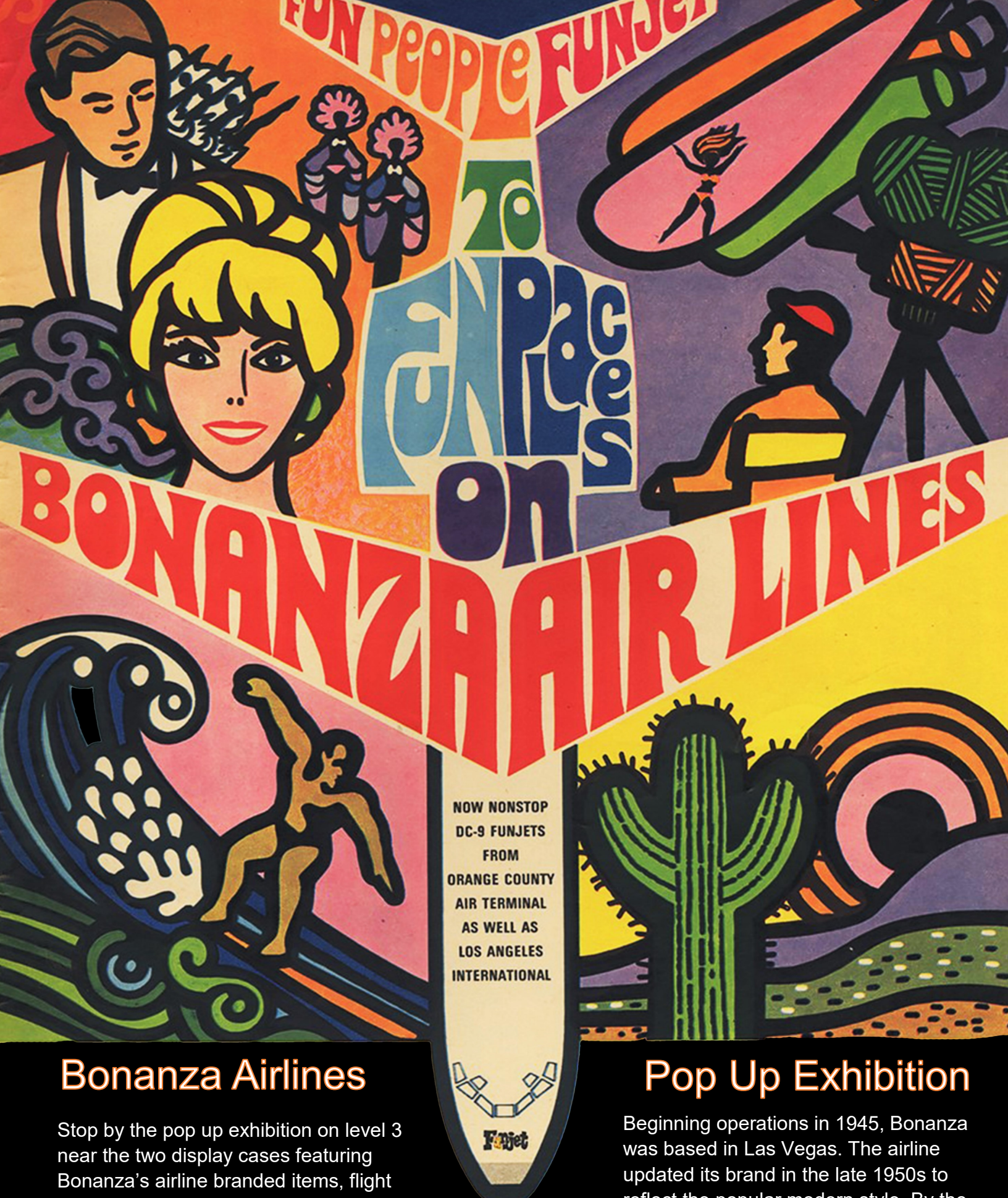
The terminal lobby featured 6 giant "Sputnik" satellite - style chandeliers.

Once known as "a symphony in cement, steel, glass, aluminum and marble," Sky Harbor's Terminal 2 gave Phoenix a status symbol that reflected the abundant growth of the city, and exemplified the pace of progress. Opening in 1962 due to the demands of increasing airline traffic and passenger usage, Terminal 2 gained notoriety for being one of the nation's most modern facilities. ***The Most Modern Air Terminal*** exhibition, presents this engineering masterpiece and its prominent features through historic images of its interior and exterior, advertisements from Sky Harbor's four original airlines, and actual architectural components from the building.

Visit the display case and notice how the replicated stained glass columns carry over to the colors of Paul Coze's *Phoenix* mural (also on level 3). Check out the aircraft-designed tiles for the terminal's restrooms. Enjoy viewing a portion of the 137-foot solar screen used to reduce heat and sunlight in the lobby, and learn about the various amenities the terminal offered from a barber shop and western clothing store, to a cocktail lounge and game room.



Terminal 2's lobby provided people the opportunity to shop from local vendors.



Bonanza Airlines

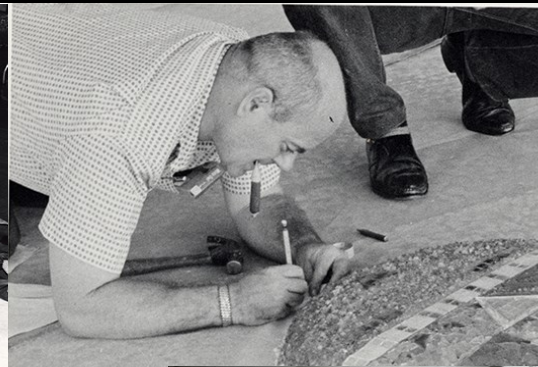
Stop by the pop up exhibition on level 3 near the two display cases featuring Bonanza's airline branded items, flight attendant uniform and rare portrait carving of the airline's founder, Edmund Converse.

Pop Up Exhibition

Beginning operations in 1945, Bonanza was based in Las Vegas. The airline updated its brand in the late 1950s to reflect the popular modern style. By the mid-1960s, everything from ashtrays to flight attendant uniforms featured the new logo and color scheme.

The Making of a Mural

Exhibition in display case on level 3, adjacent to escalators



The Making of a Mural exhibition offers visitors the chance to learn about the extensive process artist Paul Coze underwent while creating the iconic *Phoenix* mural and his desire to experiment with 3-dimensional elements. All 52 materials of the mural are listed in the display, challenging the viewer to locate them within the detailed surface of the mural. Coze journeyed all over Arizona collecting sand, rocks and natural earth from Sedona, Grand Canyon and Tucson. These natural items make the mural a tribute to the state.



Born in Beirut, Lebanon, Coze's interest in the American west brought him to Phoenix in 1952, where he was appointed as the honorary French consul for Arizona. He was fascinated by the richness of Indigenous culture and incorporated many Native symbols into the mural. His mural displays the result of a collaborative effort between students, artists, and volunteers, whose help and avid enthusiasm for art making created a piece of public art that Phoenix is known for.



Take your journey on the road.

Visit the other aviation history experiences located at Deer Valley and Goodyear Airport.



Deer Valley Airport



At Your Service

Exhibition in Deer Valley Airport Terminal

The Deer Valley Municipal Airport has come a long way since it was built in 1960. From a private airfield with only one runway and no control tower, to becoming the fifth busiest airport in the world in 2020 based on landings and takeoffs, Deer Valley has developed into one of the nation's finest general aviation airports. Essential to the success of the airports' general aviation activity is the *Fixed-Base Operator* (FBO). FBO's are companies that have permission from an airport to operate on its premises to provide aeronautical services for aircraft, passengers, and crew.

Check out the exhibition *At Your Service* located in the display case to learn about the diverse ways that teams of specialized Line Service personnel workers of the FBO serve and support general aviation flyers, aircraft, and the overall airport.

The More You Know...

The propeller on view in the exhibition designed and manufactured by Hartzell was donated to the Phoenix Airport Museum by Lincoln J. Ragsdale Jr. His father, Lincoln J. Ragsdale Sr., trained as one of the pioneering Black American fighter pilots of WWII, became a Tuskegee Airman, and later became a civil rights leader and entrepreneur in Phoenix.

Before You Go...

Make sure to take a look at the historic images located throughout the first and second floors of the terminal. These images elaborate on the many tasks Line Service personnel of the FBO do 24/7. Also look up to see the mixed media sculpture, *biplanar Arrival*, by Cathey Billian. The artwork features aircraft cables, slabs of natural Arizona copper that reference the local landscape, and blue lights that emulate the airfield taxiway. The work is a comment on the ascending and descending experiences associated with flying and the structural technology of aviation, contrasted with the natural environment that surrounds the Deer Valley area.



Cathey Billian
Biplanar Arrival, 1992
Arizona copper, stainless steel,
custom-made runway lights

Goodyear Airport



Rivets, Radials, Runways

Exhibition at Goodyear Airport



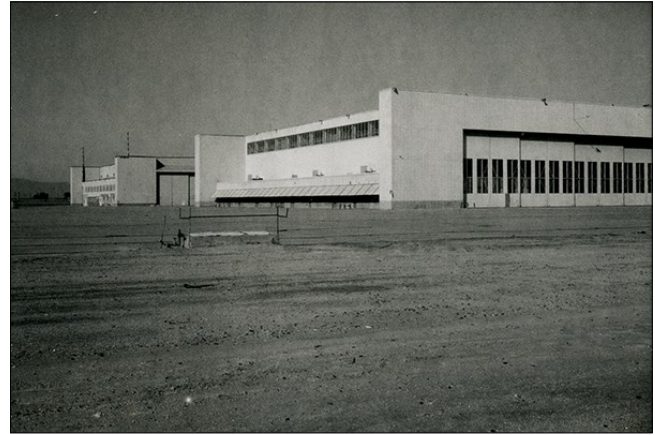
A Navy Base in the Middle of the Desert?

End your history experience at an airport that adds great value to the southwest valley. Learn about the storied history of Phoenix Goodyear Airport through the exhibition ***Rivets, Radials, Runways***. Compiled from archives from the Phoenix Airport Museum's aviation history collection, the Arizona State University historical collection, and the Goodyear Tire and Rubber in Ohio, the exhibition takes visitors through a timeline of technological advances, and the rich history of Goodyear Airport.

Fly back to the 1940s and discover how Goodyear Airport got its start as a Naval Air Facility Litchfield (NAF), with the original purpose to receive and test aircraft. Enjoy the images that tell the story of how a particular strain of cotton made manufacturing of synthetics and rubber more viable, which fueled the support that Goodyear Tire and Rubber could supply when the US entered WWII.

Learn about how NAF Litchfield transitioned into the main storage facility for the US Navy as it retired WWII, Korea, and Vietnam War era aircraft through the images that depict the approximate 5000 aircraft once stored there at its peak.

Discover when the city of Phoenix purchased the airport, and operated out of the remaining 1940s structures left behind by the Navy, and notice how far the Goodyear Airport has come through its new Executive Terminal.



Main Hangars, Buildings 52 and 18, 1959



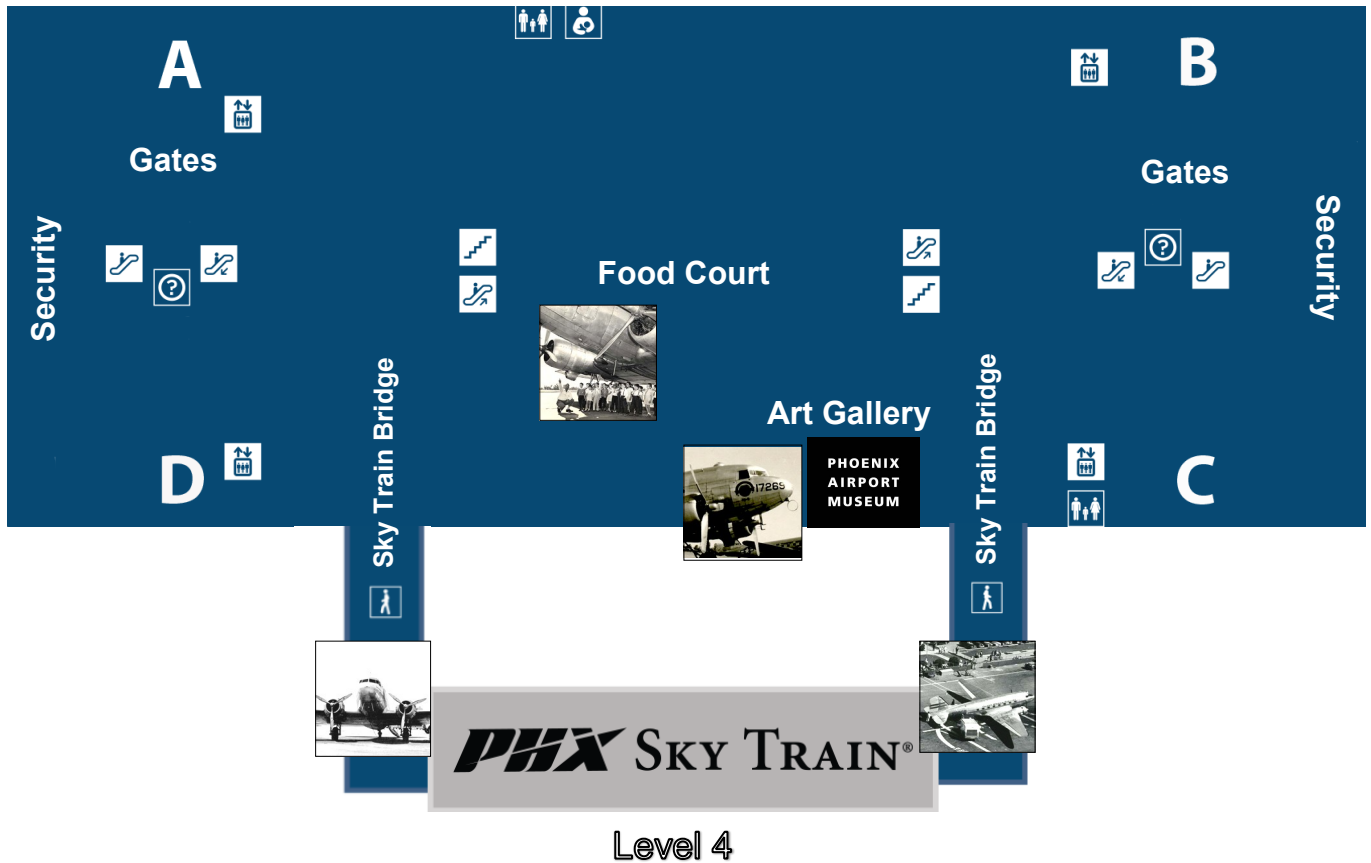
Control Tower, 1959



Naval Air Facility Buildings, 1959

Terminal 4 Map

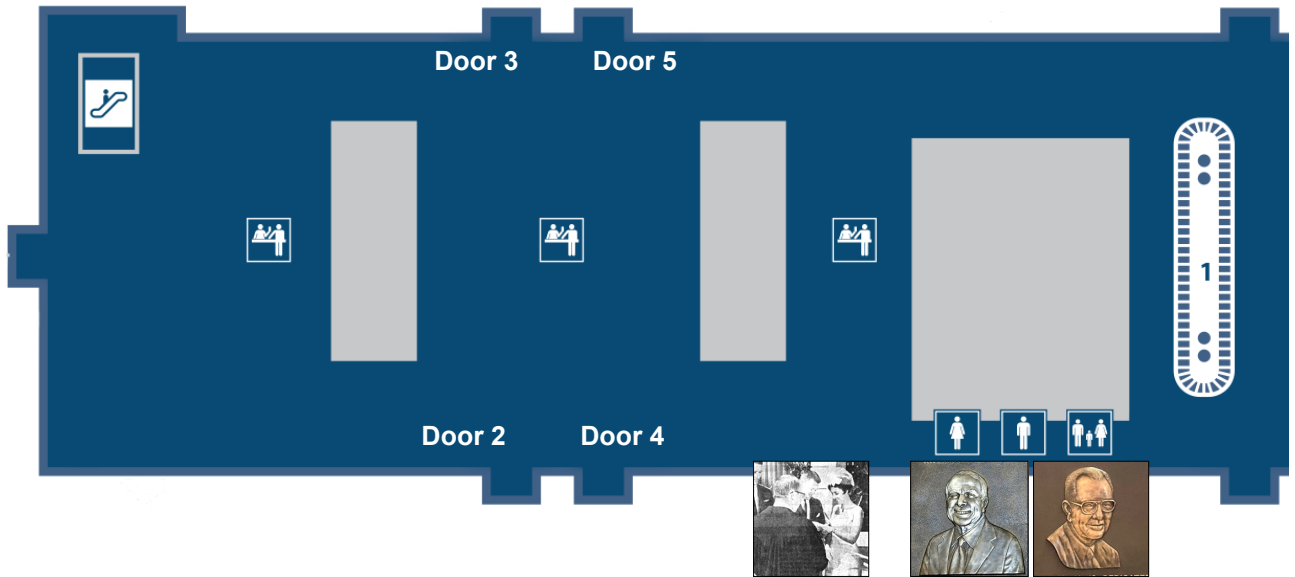
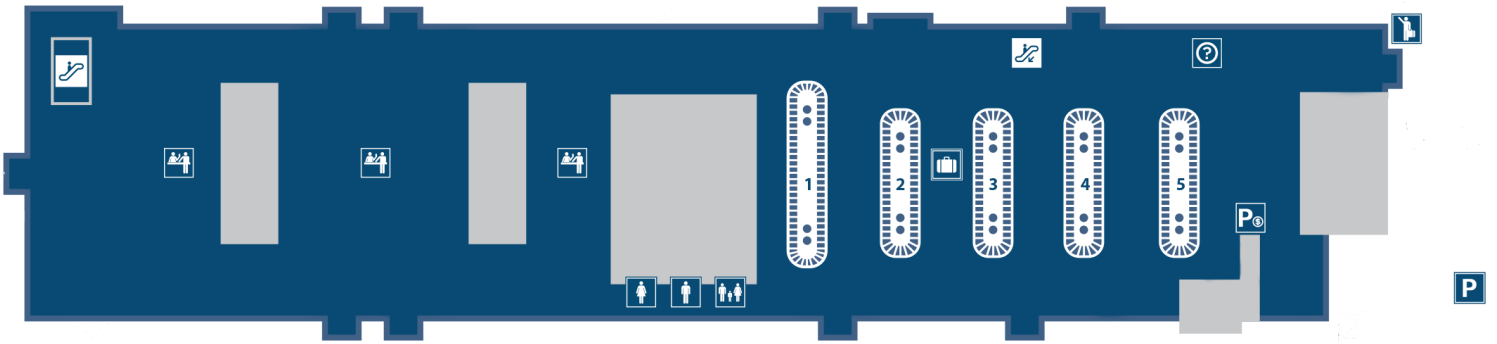
Level 3: Gates



Terminal 3 Map

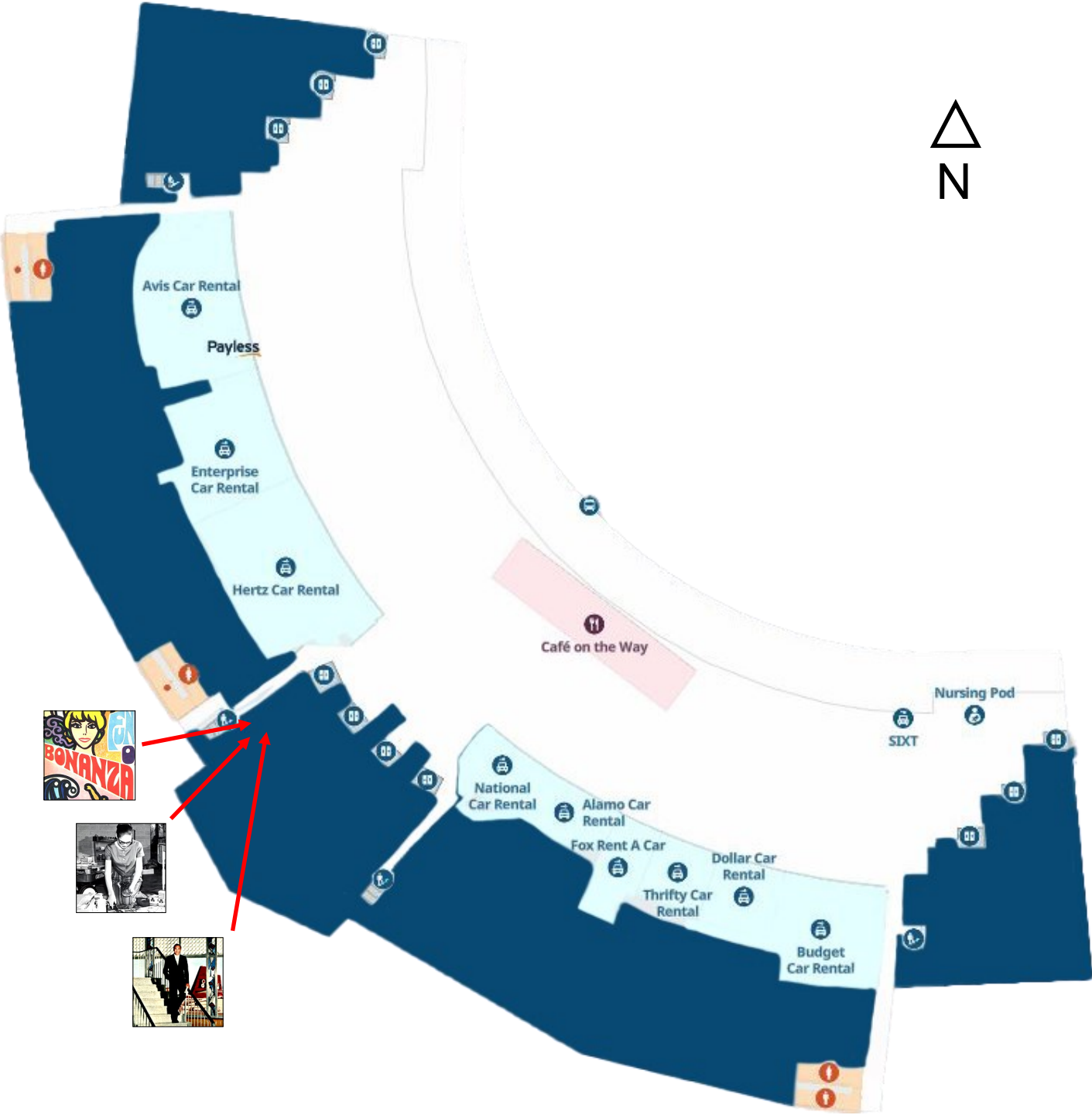
Level 1: Baggage Claim

Overview



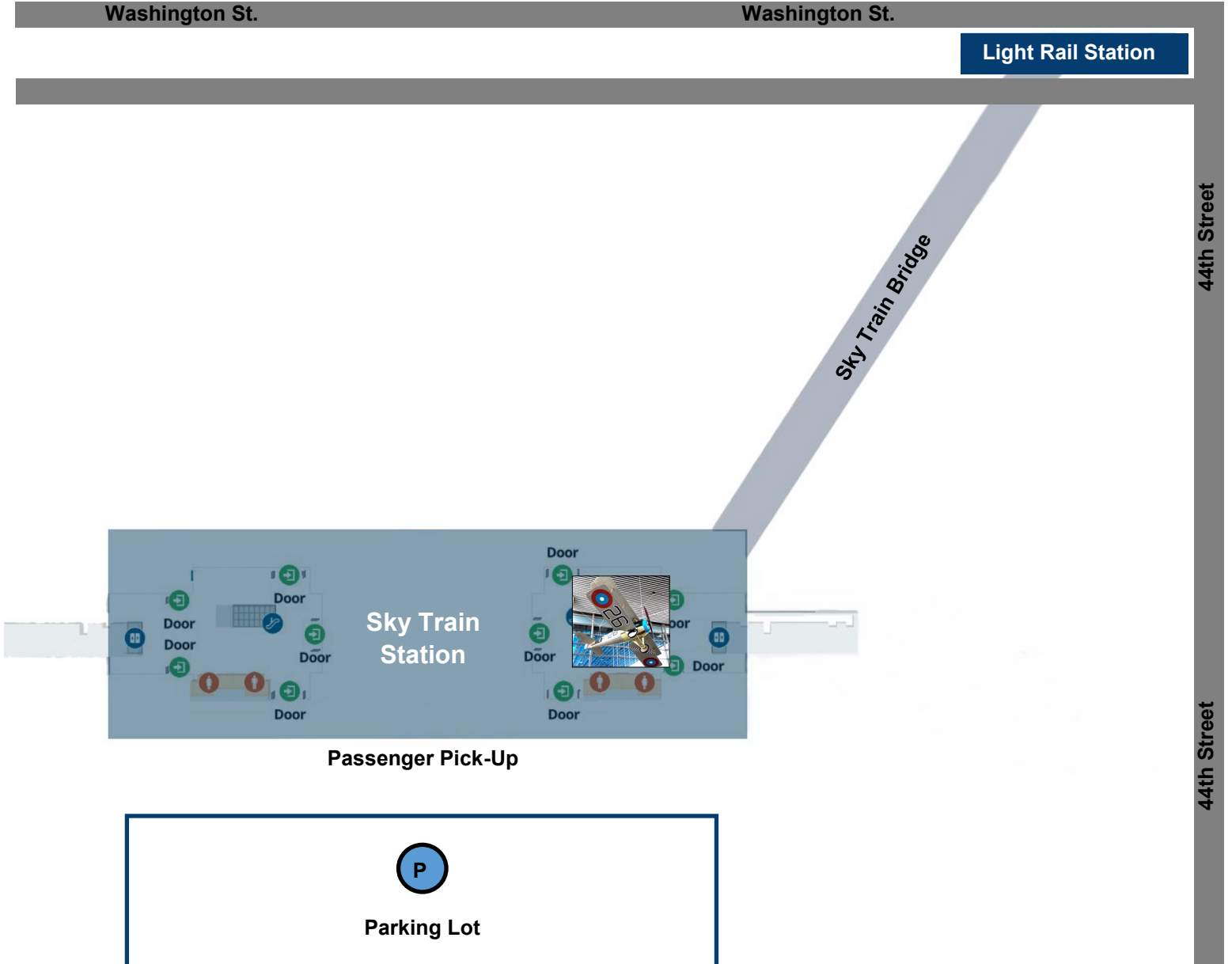
Rental Car Center Map

Level 3 Displays



44th Street Sky Train Station

Located on the southwest corner of 44th St. and Washington St.

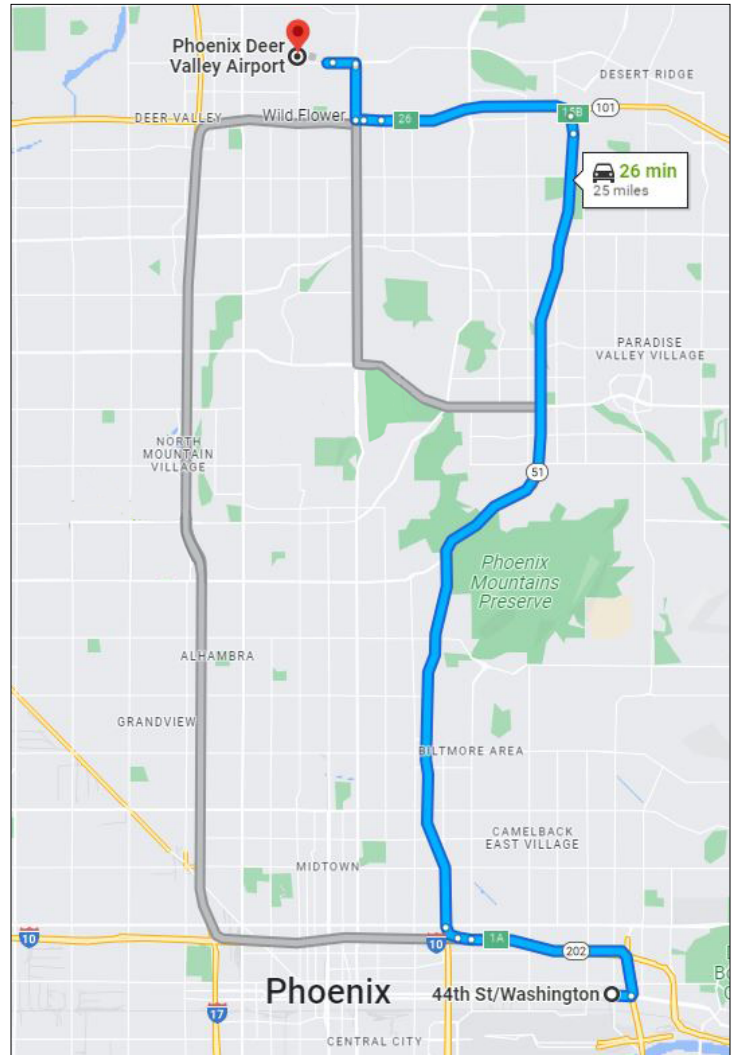


Deer Valley Map

**Destination: Deer Valley Airport
702 W Deer Valley Rd, Phoenix, AZ 85027**

26 minutes from the 44th Street Sky Train Station

- Head east on E Washington St toward S 44th St
- Turn left to merge onto AZ-202/AZ-202 Loop W
- Take exit 1A for I-10 E/AZ-51 N toward Airport/Tucson
- Keep right at the fork, follow signs for AZ-51 N
- Continue onto AZ-51 N
- Use the left 2 lanes to take exit 15B for AZ-101 Loop W
- Keep left and merge onto AZ-101 Loop W
- Take exit 26 toward 7th St.
- Take N 7th St to E Deer Valley Dr



Goodyear Map

**Destination: Phoenix Goodyear Airport
1658 S Litchfield Rd, Goodyear, AZ 85338**

30 minutes from the 44th Street Sky Train Station

- Get on AZ-202/AZ-202 Loop from E Madison St and S 40th St
- Take I-10 W to N Litchfield Rd in Goodyear. Take exit 128 from I-10 W
- Follow N Litchfield Rd to W Goodyear Pkwy
- Use the left 2 lanes to turn left onto N Litchfield Rd
- Turn right onto W Goodyear Pkwy

