

PHX DVT GYR

 CITY OF PHOENIX AVIATION DEPARTMENT

Monthly Noise Report

August 2015

Contents

- Page 2 – Introduction/Summary
- Page 3 – Noise Complaints
- Page 4 – Airport Operation Totals & Noise Monitoring Sites
- Page 5 – Fly Friendly Procedures
- Page 7 – “Early Turns” Grand Avenue

Introduction/Summary

The City of Phoenix Aviation Department Airspace and Noise Section collects aircraft noise monitoring and flight operations data to provide the community with up-to-date information concerning aircraft noise exposure. Additionally, staff receive and address noise concerns from residents through either the noise hotline (844-244-7430) or the electronic complaint form available on the Phoenix Sky Harbor International Airport (PHX) webpage:

<https://www.skyharbor.com/FlightPaths/NoiseReports>.

The following report provides a summary of the data collected for the preceding month. Each component of the report is intended to show observable trends in operation counts, flight direction, complaints, and adherence to the noise abatement procedures.

Summary:

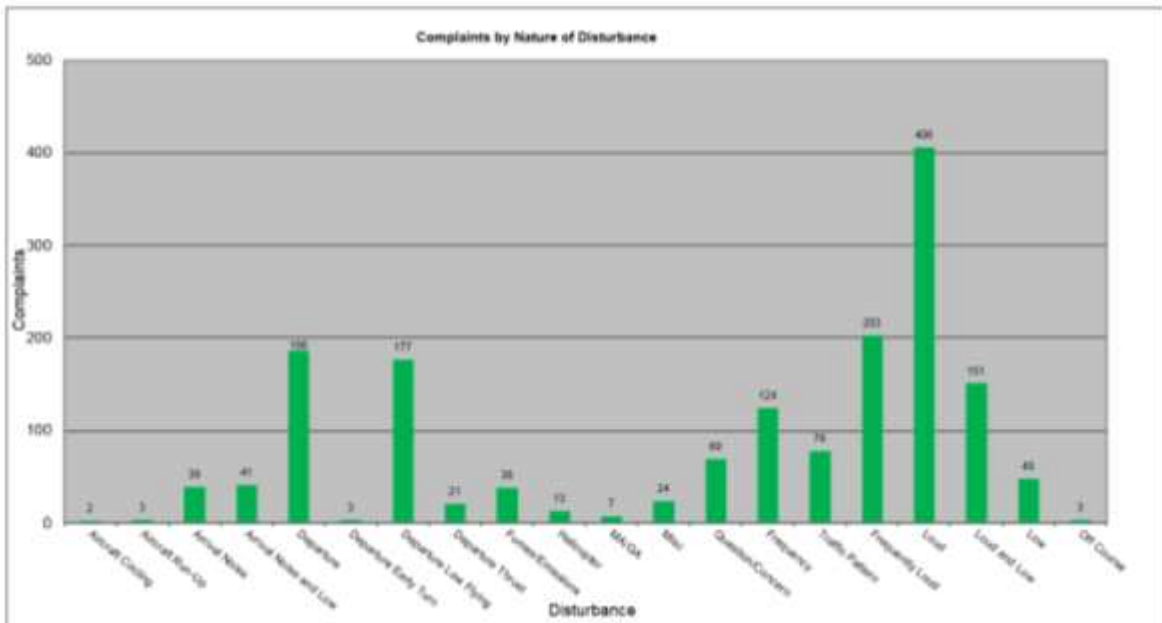
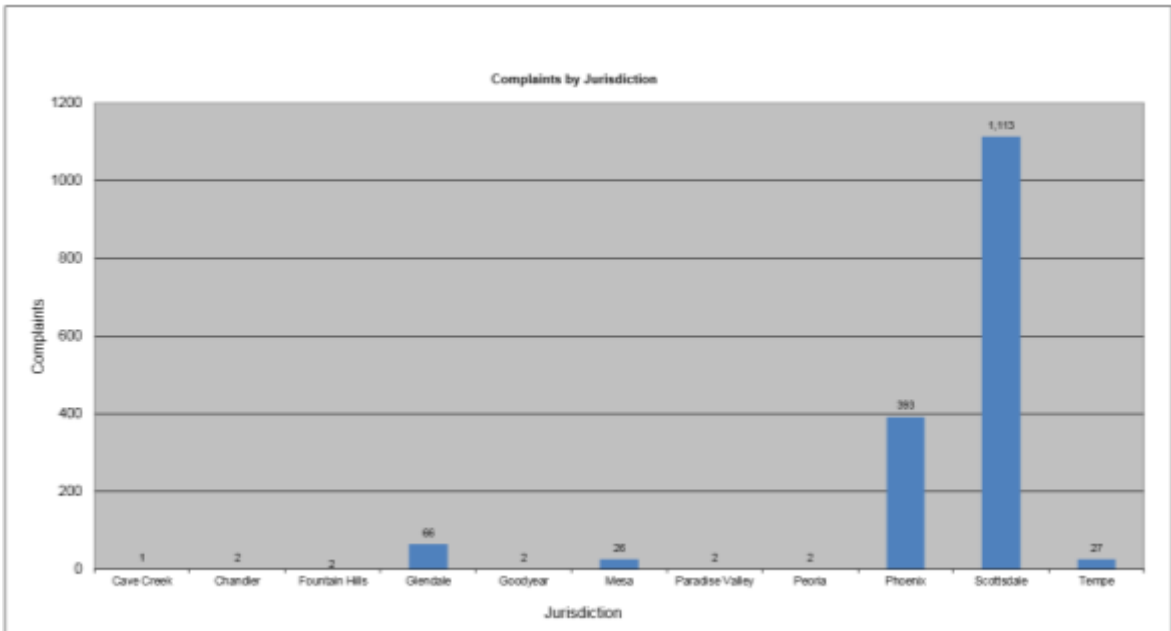
- The Airspace and Noise Section received 1,619 complaints from 154 households in August 2015.
- PHX had 36,509 operations in August 2015. This is a 3.6% decrease from July 2015. Phoenix Goodyear Airport (GYR) had 8,076 operations in August 2015. This is a 26.4% decrease from July 2015. Phoenix Deer Valley Airport (DVT) had 28,363 operations in August 2015. This is a 5.5% decrease from July 2015.
- The 4 DME Compliance Rate for August 2015 was 99.30%.
- PHX operated 48.74% westerly and 51.53% easterly in the month of August 2015.

August 2015 Noise Complaints

Complaints: Many factors contribute to the amount of complaints received each month and by how many people. Complaint totals are rarely consistent due to factors ranging from one unusual flight event that generates multiple complaints from a large group of people, a bad weather day or change in the weather, or a new homeowner that did not notice the flight paths before they purchased their home.

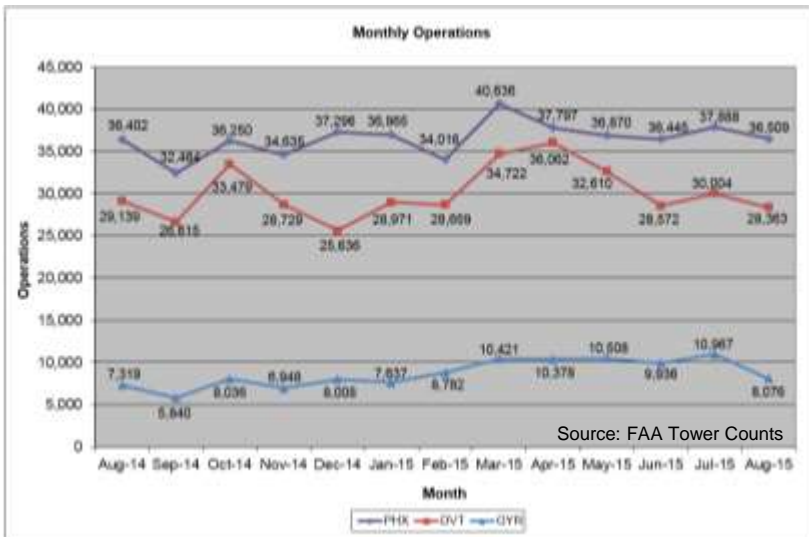
Complaint Statistics

	Aug-14		Aug-15	
	Households	Complaints	Households	Complaints
PHX- Sky Harbor	2	2	138	1,542
DVT- Deer Valley	4	8	14	75
GYR- Goodyear	1	1	2	2
Totals	7	11	154	1,619



Airport Operations

Aircraft operations generally fluctuate due to seasonal and passenger demand. The graphic below depicts operation totals at Phoenix Sky Harbor International Airport (PHX), Phoenix Deer Valley Airport (DVT) and Phoenix Goodyear Airport (GYR). Examples of peak travel times are spring break, major sporting events, the end of the school year and winter holidays.



Noise Monitoring Sites

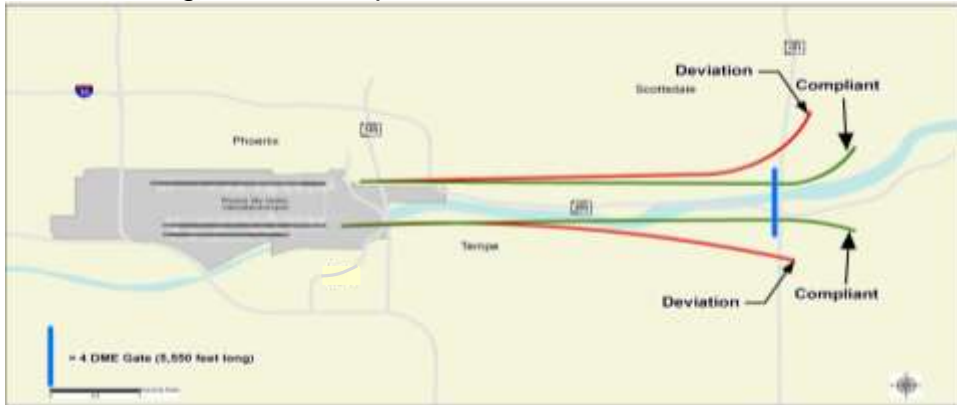
Noise Monitors: PHX has 20 noise monitors in the communities surrounding the Airport. These are located underneath the arrival and departure paths and in areas close to the Airport’s noise contours. The monitors record aircraft noise events on a continual basis which then are compared with actual flight data from the FAA. Staff can then tie noise complaints to aircraft operations and any noise events correlated with those flights. Staff also monitors changes in monthly and annual noise readings at each location.



Note: Noise Monitoring Sites with an “N/A” did not provide usable data for the preceding month due to maintenance or operational testing, or non-aircraft noise events around the site.

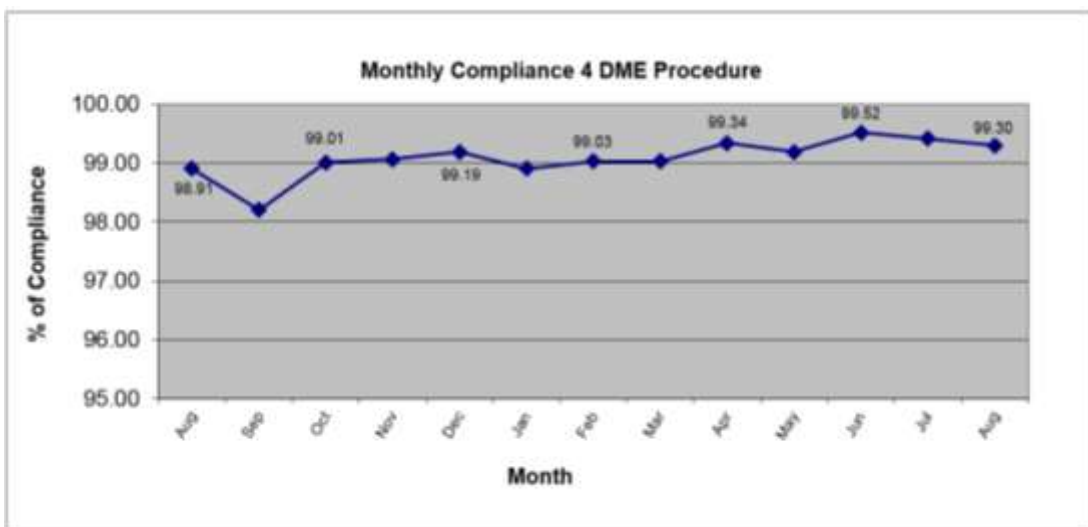
Fly Friendly Procedures

4 DME: The 4 DME (Distance Measuring Equipment) departure procedure directs jet aircraft departing to the east to travel generally along the Salt River for approximately 5 miles from the airport before turning. In the event that an aircraft deviates from the 4 DME departure procedure, Airspace and Noise Section staff will contact the carrier to determine the reason for the deviation and encourage future compliance.



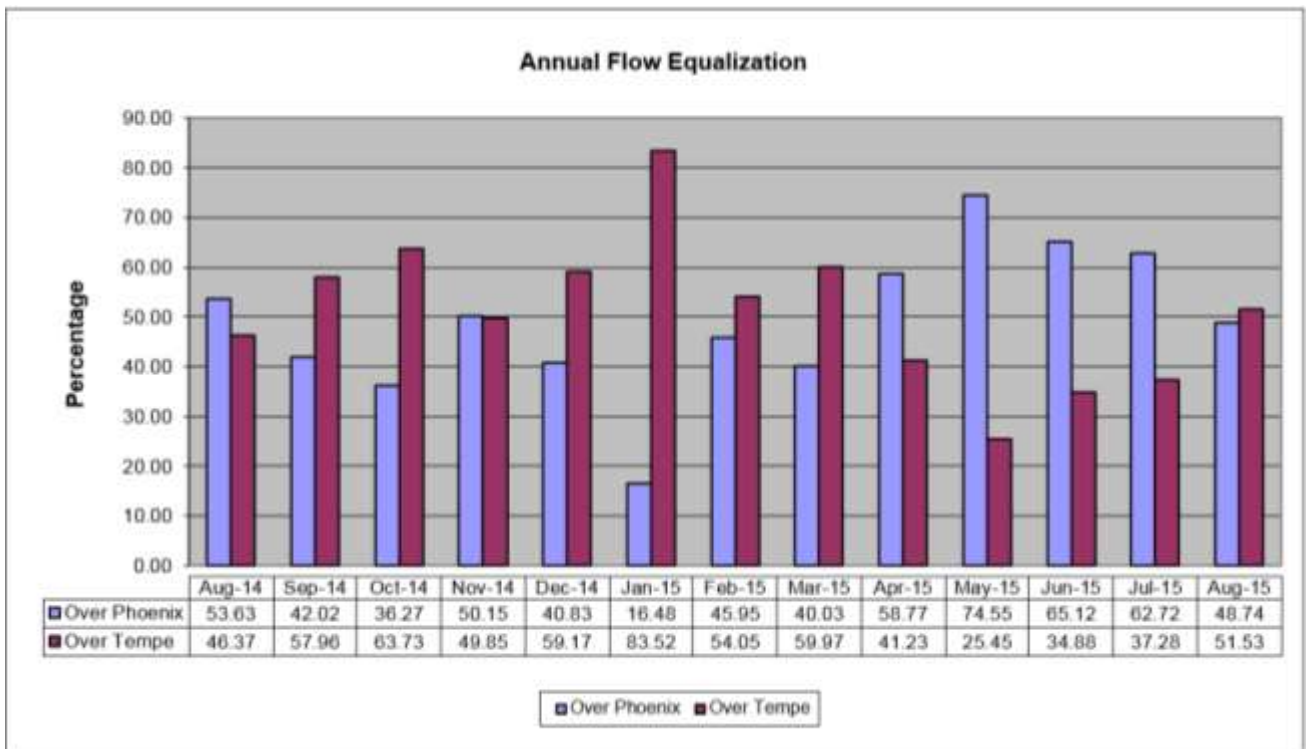
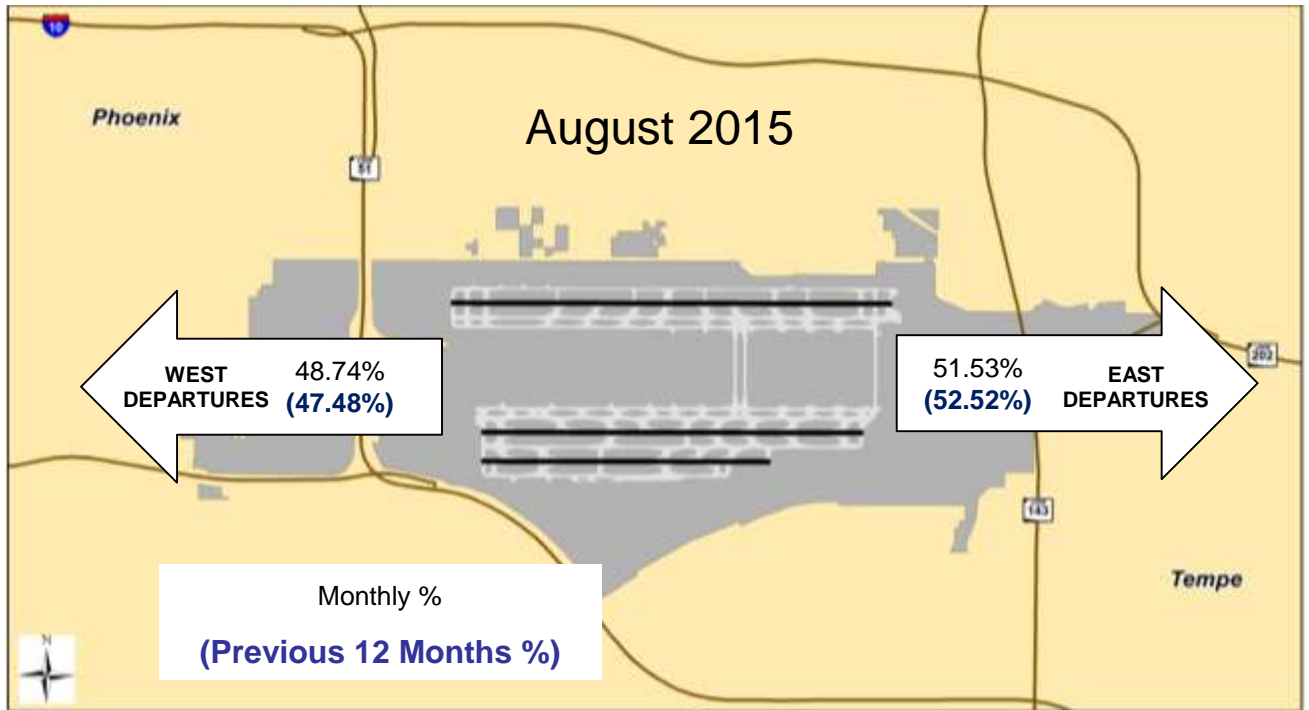
August 2015 4 DME compliance rate: 99.30%

August 2015 4 DME Deviations			
Operators with 75 or more jet flights to the east shown			
Airline Name	Deviations	Total Departures to the East	% Compliance
American Airlines	14	2,907	99.52
Southwest Airlines	11	2,418	99.54
SkyWest Airlines	5	851	99.41
Mesa Airlines	7	735	99.05
AmeriJet	0	452	100.00
Delta Airlines	2	384	99.48
United Airlines	0	222	100.00
General Aviation	14	128	89.06
Alaska Airlines	0	101	100.00
Fed Ex	0	90	100.00



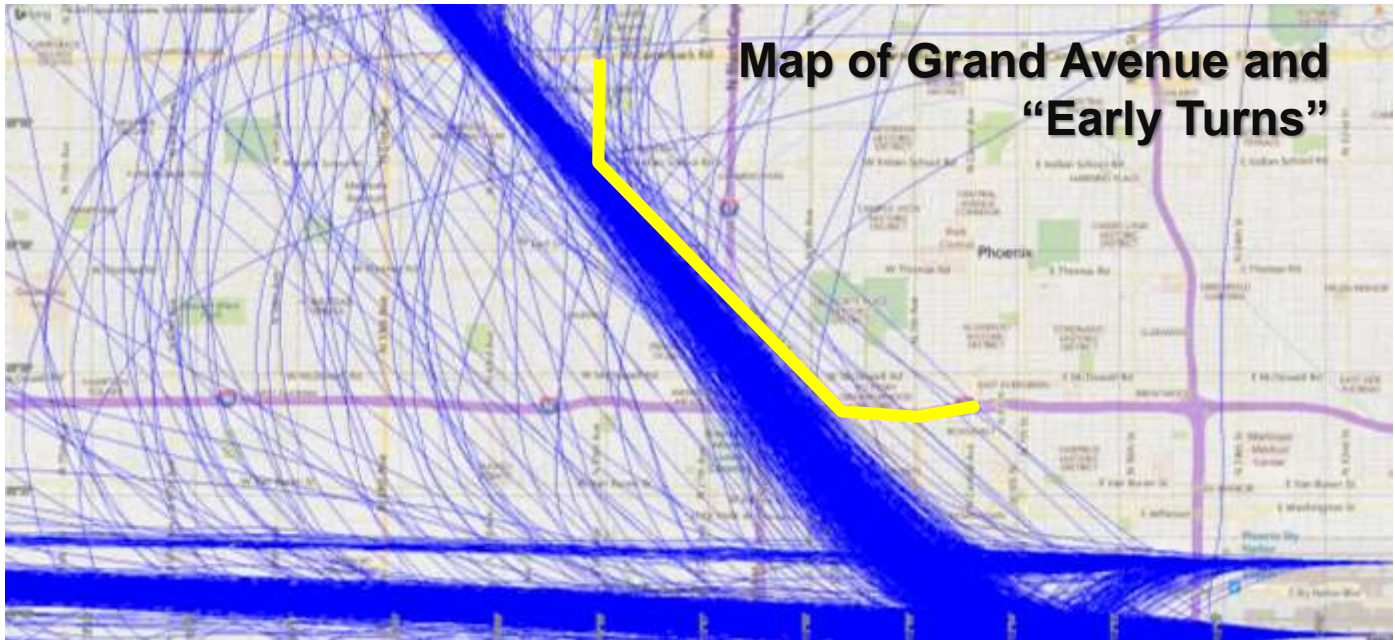
Fly Friendly Procedures Continued

Equalization: Phoenix Sky Harbor International Airport has a goal to equalize the amount of aircraft departures between the east and west over an annualized period. Monthly equalization data is shared with the FAA to help meet this goal. Because aircraft need to fly into the wind for added lift, there are times when weather can cause longer periods of flow in one direction versus the other.



“Early Turns” - Grand Avenue Month of August 2015

While a formal turning “gate” does not exist for RNAV northwest departures, the City has informally established a gate for monitoring purposes; this is generally depicted on the map below (yellow line). Staff monitors the amount of jet aircraft that turn back to due north or east before going past the informal gate and publishes that data so that the community has a sense of aircraft flight paths that deviate from the RNAV corridor; which is consistent with the November 14, 2014 FAA instruction to PHX air traffic controllers to not issue early turns to aircraft unless doing so for safety purposes. Staff continues to work with the FAA on defining Northwest route “early turn” criteria so it is representative of FAA criteria and reflective of community issues.



"Early Turns" - Grand Avenue 2015	
Counts derived from subjective analysis and subject to change	
Month	Counts
January	71
February	40
March	69
April	71
May	154
June	85
July	115
August	45
September	-
October	-
November	-
December	-
Year To Date	650

“Early Turns” - Grand Avenue

Month of August 2015 Continued

August “Early Turns” Information Table

Operation Time	Type	Flight	AC Type	Destination
2015-08-30 22:38:30	Commercial	AAL2026	A321	PHL
2015-08-30 19:16:14	Commercial	AAL477	A321	IAH
2015-08-04 22:26:38	Commercial	AAL496P	A320	DEN
2015-08-09 00:21:13	Commercial	AAL570	A321	MCO
2015-08-17 22:06:35	Commercial	AAL689	A320	EWR
2015-08-26 18:33:28	Commercial	ASA639	B738	SEA
2015-08-31 19:00:42	Commercial	ASH5598	CRJ9	ELP
2015-08-03 20:39:20	Commercial	ASH5610	CRJ9	ABQ
2015-08-22 13:49:18	Commercial	DAL2134	MD90	MSP
2015-08-18 16:57:12	Commercial	DAL899	MD90	MSP
2015-08-21 16:51:16	Commercial	DAL899	MD90	MSP
2015-08-22 15:24:13	Commercial	DCM4083	LJ45	LIT
2015-08-05 08:23:06	Commercial	EJA651	C56X	ASE
2015-08-20 20:00:26	Commercial	FDX1262	MD11	MEM
2015-08-30 19:41:54	Commercial	FFT1358	A319	IAH
2015-08-17 05:01:08	Commercial	FFT748	A319	DEN
2015-08-21 13:05:27	Privately Registered	GAJ16	CL60	STL
2015-08-09 17:45:26	Privately Registered	N311VP	C501	PVU
2015-08-21 15:28:56	Privately Registered	N550TA	C550	CMI
2015-08-18 14:48:46	Privately Registered	N75WP	C560	SJN
2015-08-20 14:17:02	Privately Registered	N75WP	C560	SJN
2015-08-21 12:45:35	Commercial	ROU1836	A319	YYZ
2015-08-25 13:49:21	Commercial	SKW2960	CRJ2	MRY
2015-08-07 15:21:44	Commercial	SKW2964	CRJ2	GJT
2015-08-16 19:09:31	Commercial	SKW2964	CRJ2	GJT
2015-08-27 15:55:25	Commercial	SKW2965	CRJ2	FLG
2015-08-03 21:55:12	Commercial	SKW2975	CRJ2	DRO
2015-08-09 21:46:26	Commercial	SKW2975	CRJ2	DRO
2015-08-05 20:12:59	Commercial	SKW2980	CRJ2	MRY
2015-08-17 16:13:19	Commercial	SWA1065	B733	LAS
2015-08-30 18:57:06	Commercial	SWA1420	B737	AUS
2015-08-29 13:07:39	Commercial	SWA1524	B733	ABQ
2015-08-13 17:09:30	Commercial	SWA176	B733	SLC
2015-08-30 18:49:36	Commercial	SWA203	B737	HOU
2015-08-25 12:18:25	Commercial	SWA2834	B737	CLE
2015-08-27 15:52:07	Commercial	SWA3020	B738	MDW
2015-08-29 15:41:06	Commercial	SWA3187	B737	ABQ
2015-08-24 15:57:19	Commercial	SWA3209	B738	BUF
2015-08-09 16:41:28	Commercial	SWA438	B737	DEN
2015-08-29 13:31:30	Commercial	SWA4389	B737	MDW
2015-08-02 17:34:09	Commercial	SWA514	B733	DEN
2015-08-30 14:19:40	Commercial	SWA591	B737	MDW
2015-08-22 15:34:39	Commercial	UAL1166	B737	IAH
2015-08-26 16:21:44	Commercial	UAL792	A320	DEN
2015-08-27 16:39:20	Commercial	UPS9806	B752	SNA