

PHX DVT GYR

 CITY OF PHOENIX AVIATION DEPARTMENT

Monthly Noise Report

October 2015

Contents

- Page 2 – Introduction/Summary
- Page 3 – Noise Complaints
- Page 4 – Airport Operation Totals & Noise Monitoring Sites
- Page 5 – Fly Friendly Procedures
- Page 7 – “Early Turns” Grand Avenue

Introduction/Summary

The City of Phoenix Aviation Department Airspace and Noise Section collects aircraft noise monitoring and flight operations data to provide the community with up-to-date information concerning aircraft noise exposure. Additionally, staff receive and address noise concerns from residents through either the noise hotline (844-244-7430) or the electronic complaint form available on the Phoenix Sky Harbor International Airport (PHX) webpage:

<https://www.skyharbor.com/FlightPaths/FileAConcernContactUs>

The following report provides a summary of the data collected for the preceding month. Each component of the report is intended to show observable trends in operation counts, flight direction, complaints, and adherence to noise abatement procedures.

Summary:

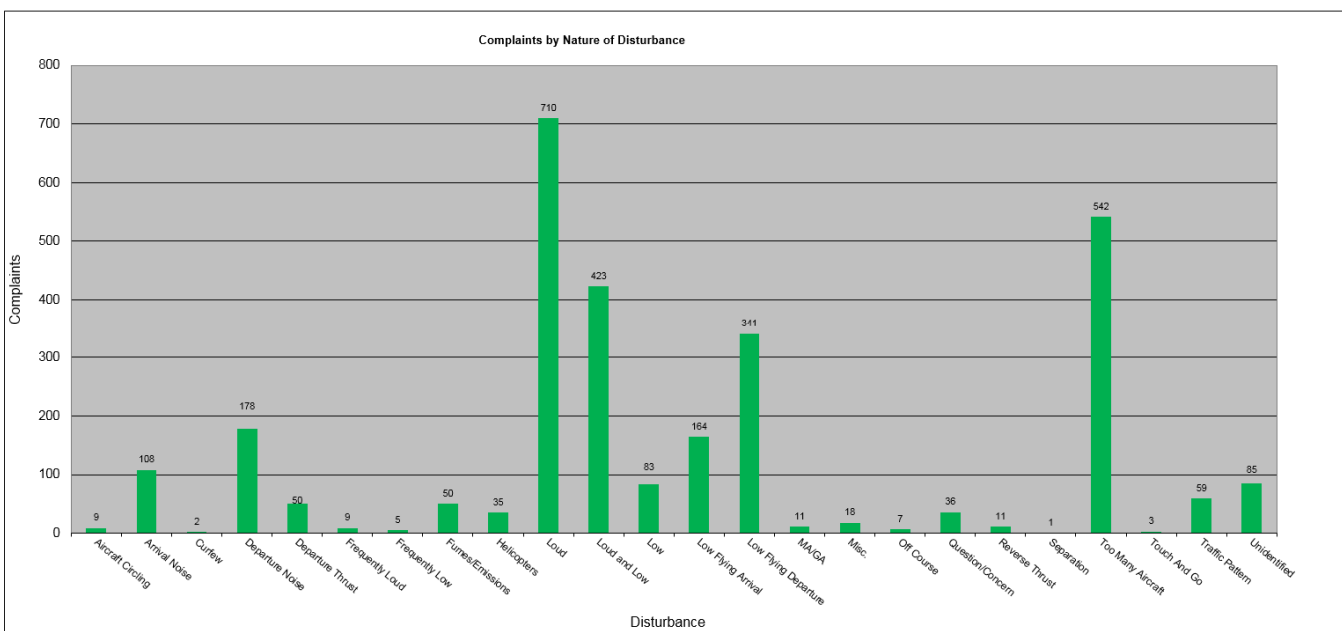
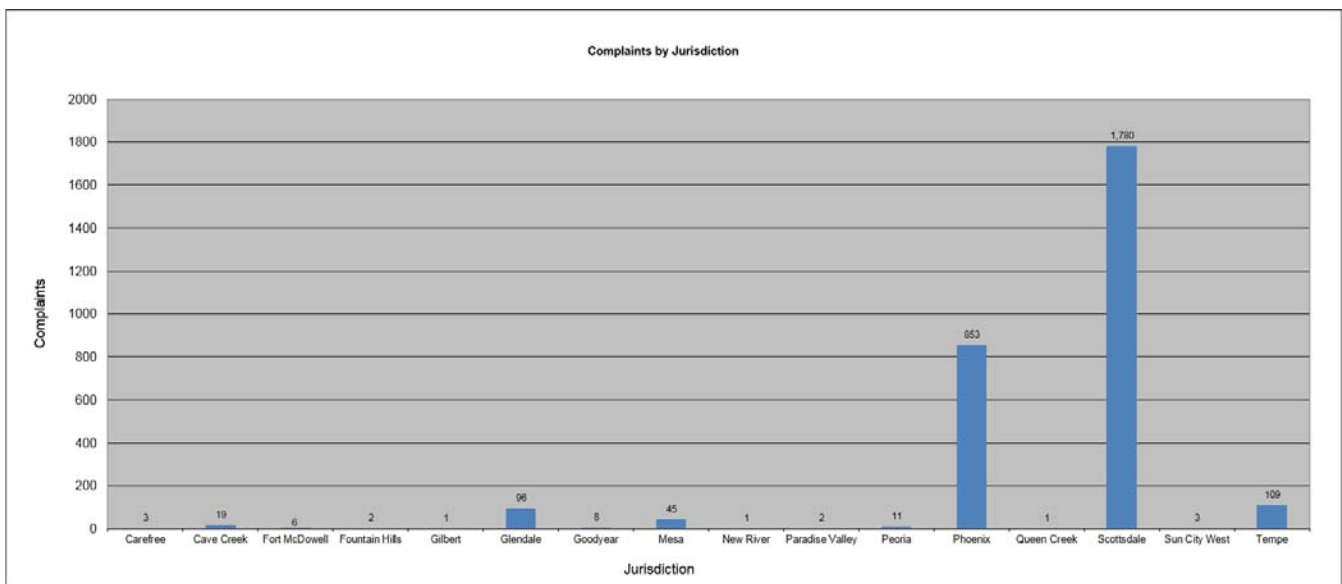
- The Airspace and Noise Section received 2,849 complaints from 238 households in October 2015.
- PHX had 36,289 operations in October 2015. This is a 9.6% increase from September 2015. Phoenix Deer Valley Airport (DVT) had 32,520 operations in October 2015. This is a 14.8% increase from September 2015. Phoenix Goodyear Airport (GYR) had 8,464 operations in October 2015. This is a 3.8% increase from September 2015.
- The 4 DME Compliance Rate for October 2015 was 99.20%.
- PHX operated 37.01% westerly and 62.99% easterly in the month of October 2015.

October 2015 Noise Complaints

Complaints: Many factors contribute to the amount of complaints received each month and by how many people. Complaint totals are rarely consistent due to factors ranging from one unusual flight event that generates multiple complaints from a large group of people, a bad weather day or change in the weather, or a new homeowner that did not notice the flight paths before they purchased their home.

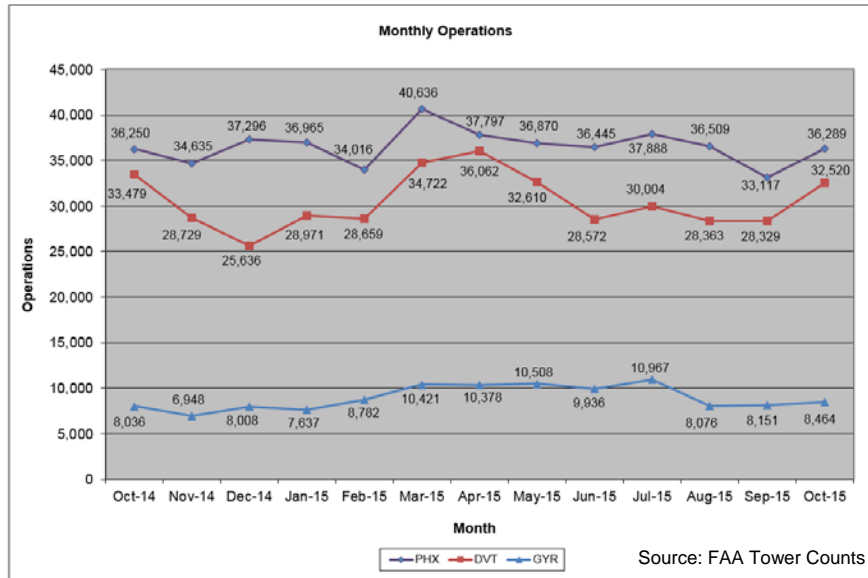
Complaint Statistics

	Oct-14		Oct-15	
	Households	Complaints	Households	Complaints
PHX- Sky Harbor	248	474	224	2,655
DVT- Deer Valley	9	9	20	184
GYR- Goodyear	2	4	4	10
Totals	259	487	238	2,849



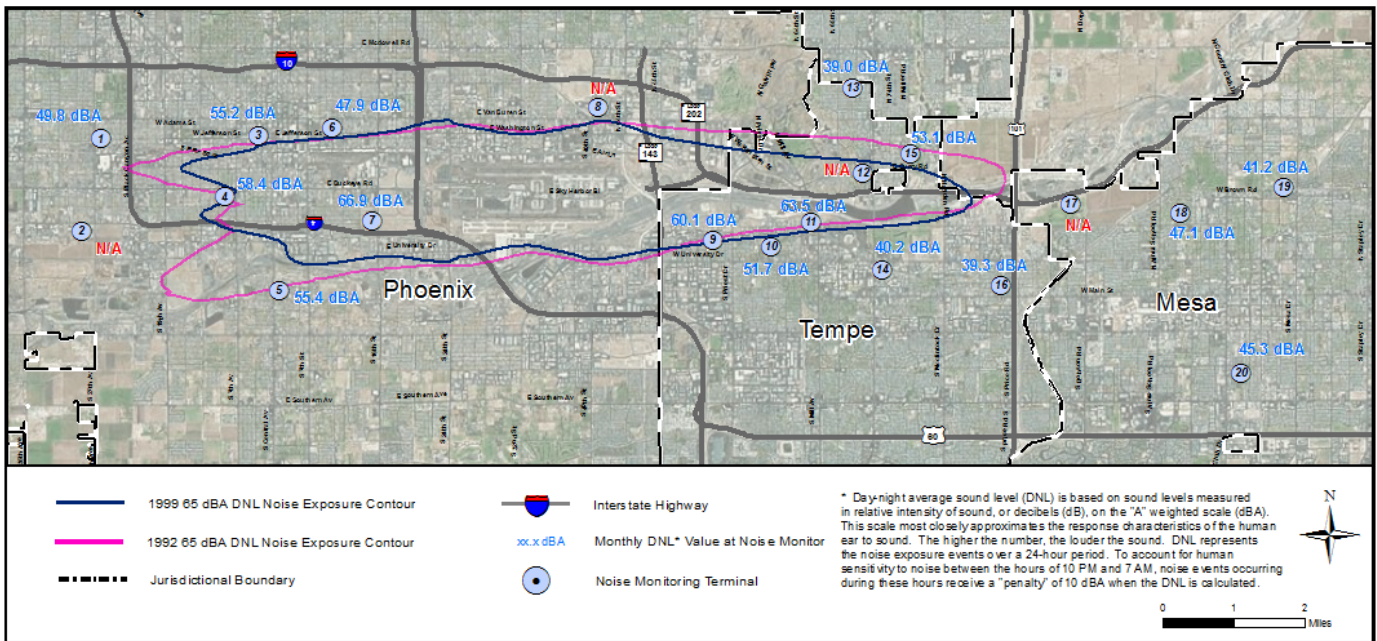
Airport Operations

Aircraft operations generally fluctuate due to seasonal and passenger demand. The graphic below depicts operation totals at Phoenix Sky Harbor International Airport (PHX), Phoenix Deer Valley Airport (DVT) and Phoenix Goodyear Airport (GYR). Examples of peak travel times are spring break, major sporting events, the end of the school year and winter holidays.



Noise Monitoring Sites

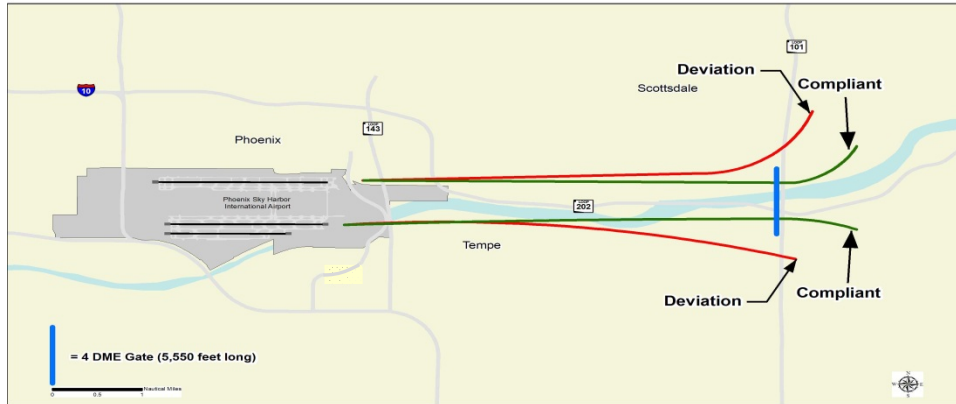
Noise Monitors: PHX has 20 noise monitors in the communities surrounding the Airport. These are located underneath the arrival and departure paths and in areas close to the Airport’s noise contours. The monitors record aircraft noise events on a continual basis which then are compared with actual flight data from the FAA. Staff can then tie noise complaints to aircraft operations and any noise events correlated with those flights. Staff also monitors changes in monthly and annual noise readings at each location.



Note: Noise Monitoring Sites with an "N/A" did not provide usable data for the preceding month due to maintenance or operational testing, or non-aircraft noise events around the site.

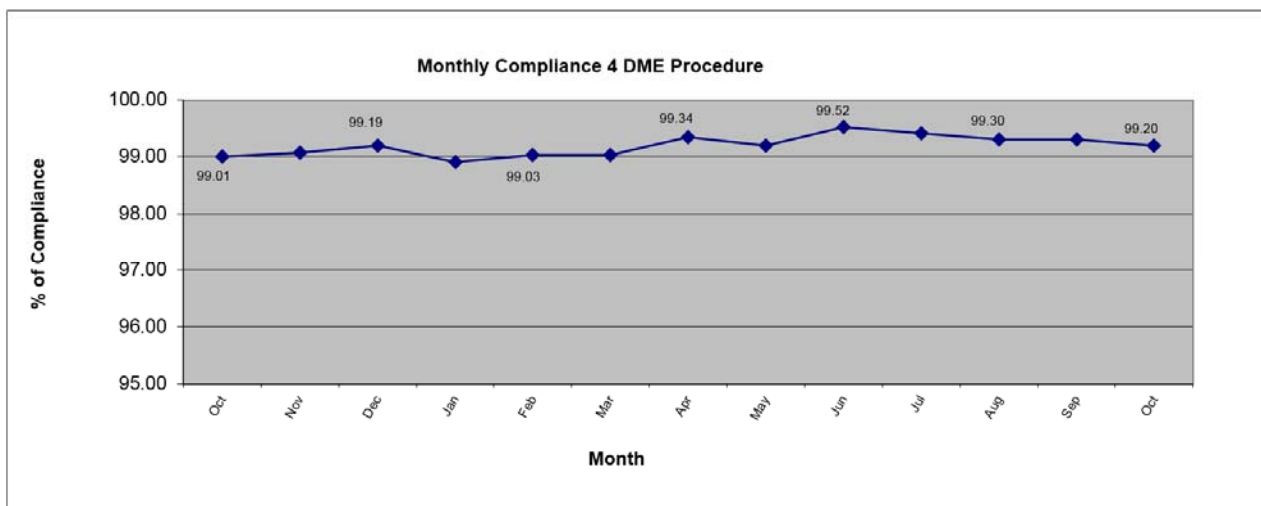
Fly Friendly Procedures

4 DME: The 4 DME (Distance Measuring Equipment) departure procedure directs jet aircraft departing to the east to travel generally along the Salt River for approximately 5 miles from the airport before turning. In the event that an aircraft deviates from the 4 DME departure procedure, Airspace and Noise Section staff will contact the carrier to determine the reason for the deviation and encourage future compliance.



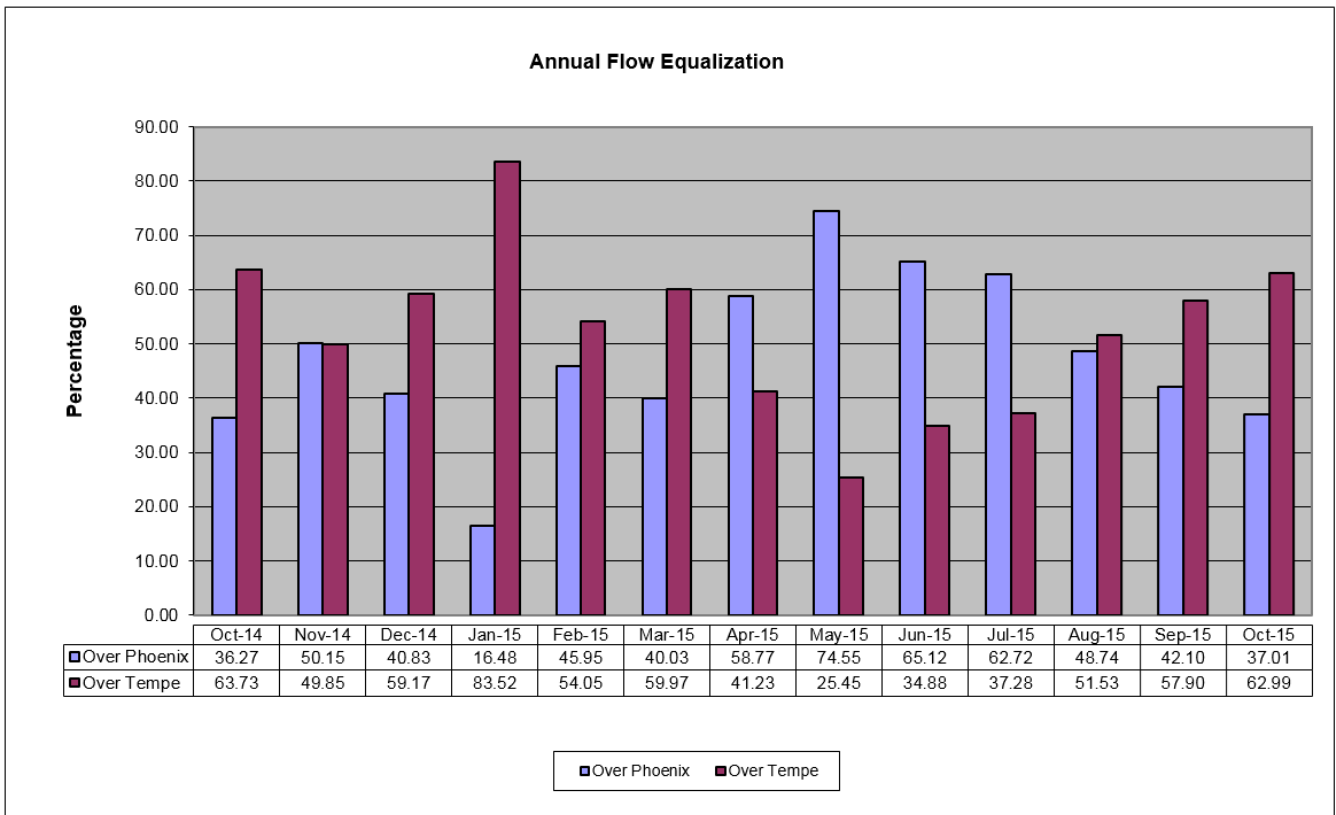
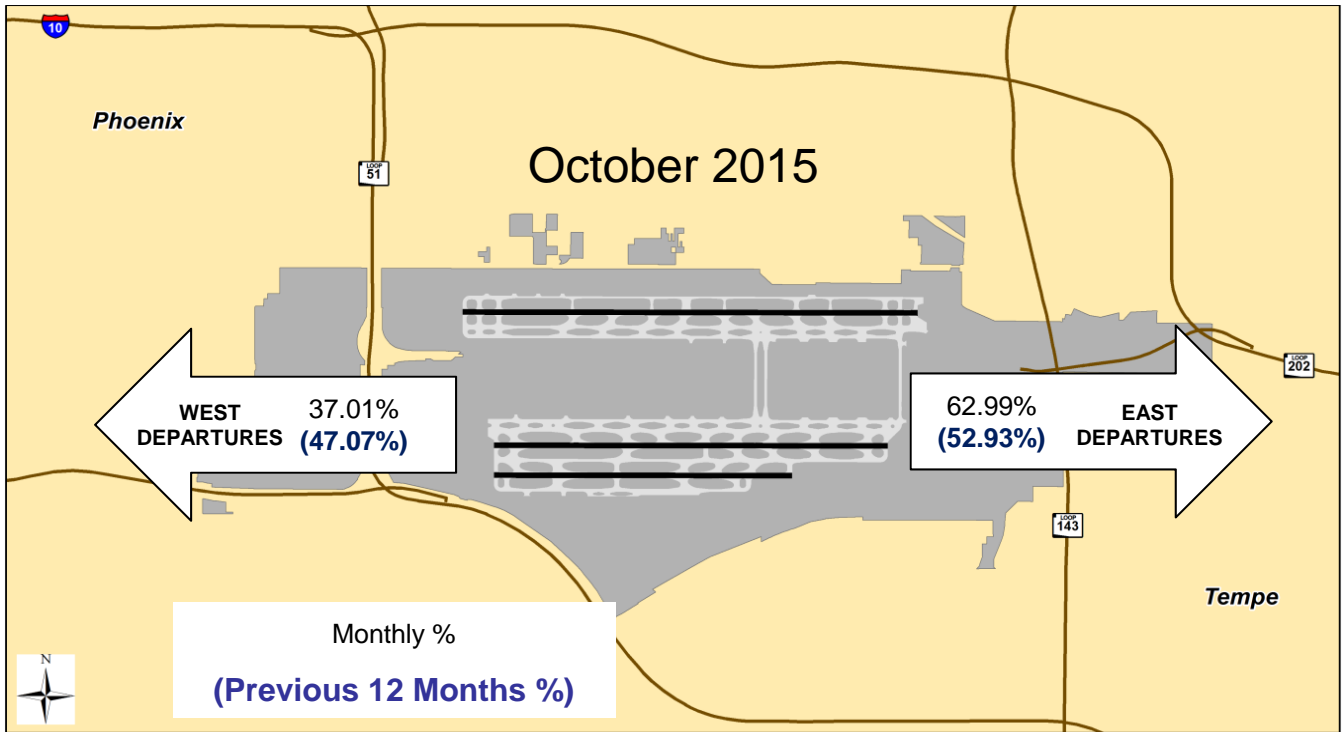
October 2015 4 DME compliance rate: 99.20%

October 2015 4 DME Deviations			
Operators with 75 or more jet flights to the east shown			
Airline Name	Deviations	Total Departures to the East	% Compliance
American Airlines	13	3,524	99.63
Southwest Airlines	21	2,927	99.28
Mesa Airlines	6	1,089	99.45
SkyWest Airlines	5	776	99.36
Delta Airlines	0	443	100.00
United Airlines	2	397	99.50
GA	11	184	94.02
Alaska Airlines	1	117	99.15
FedEx Airlines	0	103	100.00
WestJet Airlines	0	75	100.00



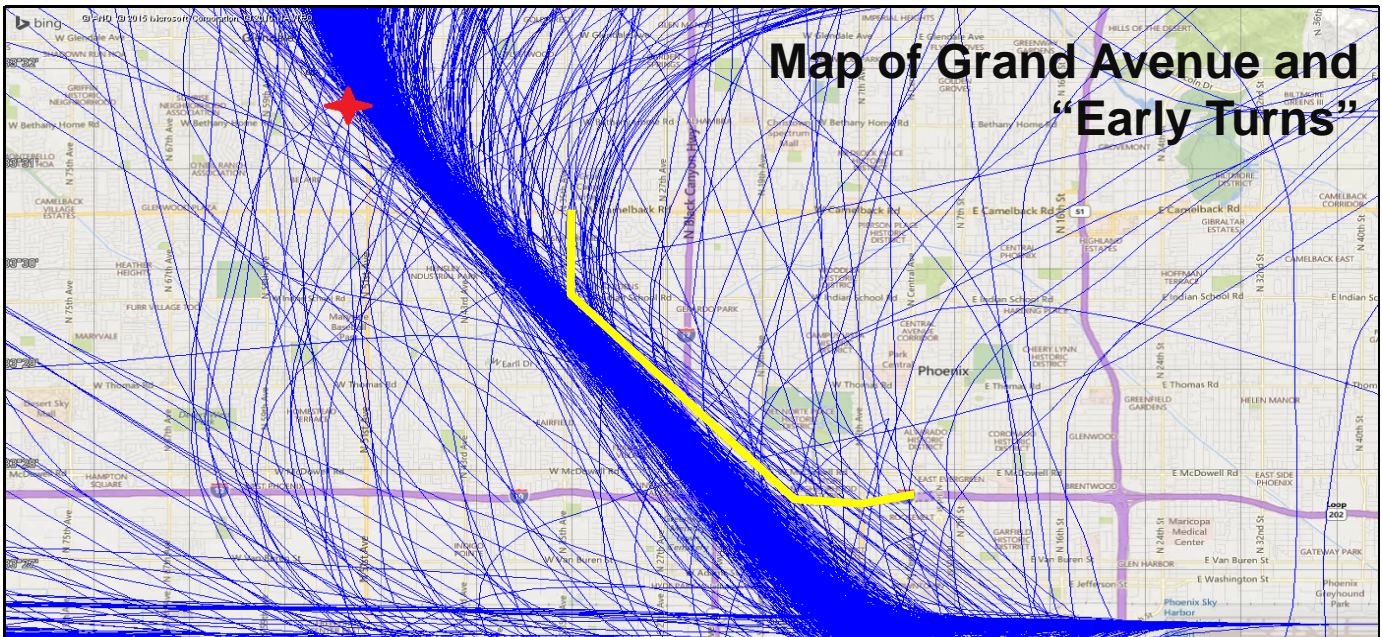
Fly Friendly Procedures Continued

Equalization: Phoenix Sky Harbor International Airport has a goal to equalize the amount of aircraft departures between the east and west over an annualized period. Because aircraft need to fly into the wind for added lift, there are times when weather can cause longer periods of flow in one direction versus the other.



“Early Turns” - Grand Avenue Month of October 2015

While a formal turning “gate” does not exist for RNAV northwest departures, the City has informally established a gate for monitoring purposes; generally depicted by the yellow line on the map below. Staff monitors the amount of jet aircraft that turn back to due north or east before going past the informal gate and publishes that data so that the community has a sense of aircraft flight paths that deviate from the RNAV corridor; which is consistent with the November 14, 2014 FAA instruction to PHX air traffic controllers to not issue early turns to aircraft unless doing so for safety purposes. Staff continues to work with the FAA on defining Northwest route “early turn” criteria so it is representative of FAA and reflective of community issues.



"Early Turns" - Grand Avenue 2015	
Counts derived from subjective analysis and subject to change	
Month	Counts
January	71
February	40
March	69
April	71
May	154
June	85
July	115
August	45
September	65
October	84
November	-
December	-
Year To Date	799

“Early Turns” - Grand Avenue

Month of October 2015 Continued

October 1-15 “Early Turns” FAA Info Table

#	Operation Time	Type	Flight	AC Type	RWY	Destination	FAA Info.
1	2015-10-06 14:24:58	Commercial	AAL407	A321	25R	SFO	Weather related
2	2015-10-08 15:42:12	Commercial	AAL412	A319	25R	DTW	Flew route within FAA specifications
3	2015-10-08 15:49:56	Commercial	AAL437	A321	25R	ORD	Flew route within FAA specifications
4	2015-10-03 18:27:31	Commercial	ASA639	B738	25R	SEA	Flew route within FAA specifications
5	2015-10-13 07:17:55	Commercial	DAL1492	MD90	25R	MSP	Flew route within FAA specifications
6	2015-10-08 18:17:27	Privately Registered	N22PC	C550	25L	LBB	Not RNAV
7	2015-10-07 17:41:41	Privately Registered	N335MB	C525	25L	HII	Not RNAV
8	2015-10-08 22:16:12	Privately Registered	N45MF	LJ35	25L	ABQ	Not RNAV
9	2015-10-06 15:01:08	Privately Registered	N508KD	C560	25R	PGA	Weather related
10	2015-10-05 13:34:07	Privately Registered	N604DT	CL60	25L	SBN	Flew route within FAA specifications
11	2015-10-12 21:38:59	Commercial	SKW2969	CRJ2	25R	DRO	Flew route within FAA specifications
12	2015-10-01 20:01:28	Commercial	SKW2976	CRJ2	25R	FLG	Flew route within FAA specifications
13	2015-10-05 19:19:50	Commercial	SKW2982	CRJ2	25R	GJT	Weather related
14	2015-10-05 16:57:52	Commercial	SKW4618	CRJ9	25R	SLC	Flew route within FAA specifications
15	2015-10-08 16:53:50	Commercial	SKW4618	CRJ9	25R	SLC	Flew route within FAA specifications
16	2015-10-04 17:54:24	Commercial	SKW4799	CRJ7	25R	SEA	Flew route within FAA specifications
17	2015-10-14 19:41:20	Commercial	SWA2356	B737	25R	MDW	Flew route within FAA specifications
18	2015-10-08 16:16:33	Commercial	SWA3209	B738	25R	BUF	Flew route within FAA specifications
19	2015-10-06 14:49:35	Commercial	SWA350	B737	25R	OMA	Weather related
20	2015-10-02 14:22:27	Commercial	SWA482	B737	25R	MDW	Flew route within FAA specifications
21	2015-10-14 16:15:22	Commercial	SWA612	B733	25R	LAS	Flew route within FAA specifications
22	2015-10-01 15:06:20	Commercial	SWA9009	B737	25R	BUR	Flew route within FAA specifications

**“Early Turns” - Grand Avenue
Month of October 2015 Continued
October 16-30 “Early Turns” FAA Info Table**

#	Operation Time	Type	Flight	AC Type	RWY	Destination	FAA Response
1	2015-10-18 15:33:29	Commercial	AAL1854	A321	25R	CLT	Within .50 miles of TWSND
2	2015-10-29 15:06:18	Commercial	AAL1854	A321	25R	CLT	Weather related
3	2015-10-20 12:27:49	Commercial	AAL1951	A321	25R	DEN	Weather related
4	2015-10-18 15:42:41	Commercial	AAL412	A319	25R	DTW	Within .50 miles of TWSND
5	2015-10-20 11:43:28	Commercial	AAL432	B752	25R	OGG	Weather related
6	2015-10-18 15:30:42	Commercial	AAL437	A321	25R	ORD	Within .50 miles of TWSND
7	2015-10-22 19:09:19	Commercial	AAL484	A320	25R	STL	Not turned by ATC
8	2015-10-18 15:42:42	Commercial	AAL486	A321	25R	ORD	Not turned by ATC
9	2015-10-29 15:01:35	Commercial	AAL498D	A320	25R	DCA	Weather related
10	2015-10-22 19:22:48	Commercial	AAL514	A319	25R	CMH	Not turned by ATC
11	2015-10-18 15:17:55	Commercial	AAL551	A321	25R	DFW	Within .50 miles of TWSND
12	2015-10-29 15:16:31	Commercial	AAL551	A321	25R	DFW	Weather related
13	2015-10-18 17:34:41	Commercial	AAL572	A319	25R	BOI	Weather related
14	2015-10-18 15:48:27	Commercial	AAL574	A320	25R	TPA	Weather related
15	2015-10-18 15:49:59	Commercial	AAL594	A319	25R	IAH	Weather related
16	2015-10-18 15:41:42	Commercial	AAL614	A321	25R	ATL	Within .50 miles of TWSND
17	2015-10-18 15:24:04	Commercial	AAL618	A320	25R	BWI	Within .50 miles of TWSND
18	2015-10-18 15:46:15	Commercial	AAL622	A321	25R	JFK	Weather related
19	2015-10-28 15:23:40	Commercial	AAL634	A319	25R	PIT	Not turned by ATC & within .50 of TWSND
20	2015-10-29 15:03:41	Commercial	AAL642	A320	25R	DEN	Weather related

**“Early Turns” - Grand Avenue
Month of October 2015 Continued
October 16-30 “Early Turns” FAA Info Table**

21	2015-10-20 11:49:32	Commercial	AAL647	A320	25R	ONT	Weather related
22	2015-10-18 15:35:21	Commercial	AAL683	A320	25R	EWR	Within .50 miles of TWSND
23	2015-10-26 15:43:21	Commercial	AAL683	A320	25R	EWR	Not turned by ATC
24	2015-10-22 19:20:52	Commercial	AAL779	A319	25R	DSM	Not turned by ATC
25	2015-10-29 14:54:01	Commercial	AAL890	A321	25R	CLT	Weather related
26	2015-10-20 11:57:22	Commercial	ASA625	B739	25R	SEA	Weather related
27	2015-10-20 12:34:48	Commercial	ASH5600	CRJ9	25R	DRO	Weather related
28	2015-10-18 15:20:16	Commercial	ASH5649	CRJ9	25R	SAT	Within .50 miles of TWSND
29	2015-10-18 15:36:38	Commercial	ASH5803	CRJ9	25R	ABQ	Within .50 miles of TWSND
30	2015-10-18 15:39:45	Commercial	ASH5866	CRJ9	25R	ELP	Within .50 miles of TWSND
31	2015-10-19 15:12:48	Commercial	CFASD	CL60	25L	YVR	Directly over TWSND
32	2015-10-20 12:02:43	Commercial	DAL171	B752	25R	MSP	Weather related
33	2015-10-20 11:47:32	Commercial	FDX3808	B752	25R	OAK	Weather related
34	2015-10-20 12:16:07	Privately Registered	N192RS	FA50	25L	VNY	Weather related
35	2015-10-18 19:30:11	Privately Registered	N221BW	CL60	25R	SGR	DAVZZ and flew published route
36	2015-10-29 14:43:23	Privately Registered	N76SF	CL60	25L	BMI	Weather related
37	2015-10-20 01:11:52	Commercial	NKS972	A320	25R	DFW	Weather related
38	2015-10-20 13:48:05	Commercial	SCX602	B738	25R	MSP	Weather related
39	2015-10-20 12:20:21	Commercial	SKW2950	CRJ2	25R	FLG	Weather related
40	2015-10-16 15:21:32	Commercial	SKW2959	CRJ2	25R	GJT	Within .50 miles of TWSND

“Early Turns” - Grand Avenue

Month of October 2015 Continued

October 16-30 “Early Turns” FAA Info Table

41	2015-10-18 15:38:02	Commercial	SKW2959	CRJ2	25R	GJT	Within .50 miles of TWSND
42	2015-10-29 15:18:38	Commercial	SKW2959	CRJ2	25R	GJT	Weather related
43	2015-10-28 17:03:25	Commercial	SKW4618	CRJ9	25R	SLC	Not turned by ATC & within .50 of TWSND
44	2015-10-29 18:10:52	Commercial	SWA1338	B733	25R	MCI	Weather related
45	2015-10-18 15:19:17	Commercial	SWA1647	B733	25R	ELP	Within .50 miles of TWSND
46	2015-10-29 17:41:35	Commercial	SWA169	B737	25R	MKE	Weather related
47	2015-10-20 12:05:13	Commercial	SWA1764	B737	25R	LAS	Weather related
48	2015-10-20 12:51:01	Commercial	SWA2129	B737	25R	SFO	Weather related
49	2015-10-23 22:18:50	Commercial	SWA232	B737	25R	DEN	Was not turned by ATC
50	2015-10-29 14:50:59	Commercial	SWA2500	B737	25R	SLC	Weather related
51	2015-10-26 17:54:45	Commercial	SWA2501	B733	25R	SMF	Not turned by ATC & within .50 of TWSND
52	2015-10-18 15:28:56	Commercial	SWA2781	B737	25R	ATL	Within .50 miles of TWSND
53	2015-10-29 18:13:04	Commercial	SWA299	B733	25R	LAX	Weather related
54	2015-10-20 12:13:41	Commercial	SWA2996	B737	25R	DEN	Weather related
55	2015-10-26 15:53:13	Commercial	SWA3020	B738	25R	MDW	Not turned by ATC
56	2015-10-20 12:23:27	Commercial	SWA363	B737	25R	BUR	Weather related
57	2015-10-18 15:44:26	Commercial	SWA448	B737	25R	SLC	Weather related
58	2015-10-26 16:19:36	Commercial	SWA612	B733	25R	LAS	Not turned by ATC & within .50 of TWSND
59	2015-10-16 16:32:44	Commercial	SWQ880 2	B734	25L	YVR	Weather related
60	2015-10-20 13:45:57	Commercial	UAL1761	B738	25R	DEN	Weather related
61	2015-10-29 18:19:46	Commercial	UAL1835	A320	25R	SFO	Weather related
62	2015-10-20 12:11:41	Commercial	UAL254	A320	25R	DEN	Weather related