

PHX DVT GYR

 CITY OF PHOENIX AVIATION DEPARTMENT

Monthly Noise Report

May 2015

Contents

- Page 2 – Introduction/Summary
- Page 3 – Noise Complaints
- Page 4 – Airport Operation Totals & Noise Monitoring Sites
- Page 5 – Fly Friendly Procedures
- Page 7 – “Early Turns” Grand Avenue

Introduction/Summary

The Noise Information Office at Phoenix Sky Harbor International Airport (PHX) collects aircraft noise monitoring and flight operations data to provide the City of Phoenix with up-to-date information concerning aircraft noise exposure to the communities surrounding the Airport. Additionally, Noise Office staff receive and address complaints or concerns from citizens regarding aircraft noise through either the noise hotline (602-683-2669) or the electronic complaint form available on the PHX Web page: <https://skyharbor.com/NoiseComplaint.aspx>.

The following report provides a summary of the data collected by the Noise Office. Each section of the report is intended to show how trends in operation counts, flight direction, complaints, and adherence to the noise abatement procedures are independent of each other and the generation of noise from these operations.

Summary:

- On September 18, 2014 the Federal Aviation Administration (FAA) implemented new satellite based departure procedures from Phoenix Sky Harbor International Airport.
- The Noise Information Office received 4,761 complaints from 464 households in May 2015.
- PHX had 36,870 operations in May 2015. This is a 2.5% decrease from April 2015. Phoenix Goodyear Airport (GYR) had 10,508 operations in May 2015. This is a 1.3% increase from April 2015. Phoenix Deer Valley Airport (DVT) had 32,610 operations in May 2015. This is a 10.6% decrease from April 2015.
- The 4 DME Compliance Rate for May 2015 was 99.19%.
- PHX operated 74.55% westerly and 25.45% easterly in the month of May 2015.

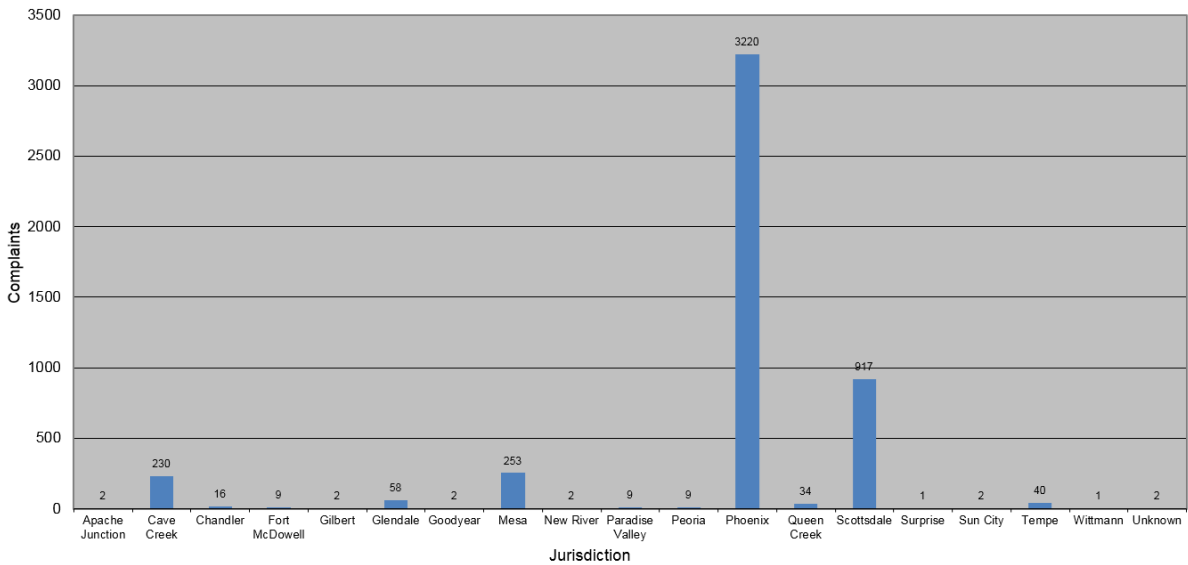
May 2015 Noise Complaints

Complaints: Many factors contribute to the amount of complaints received each month and by how many people. Complaint totals are rarely consistent due to factors ranging from one unusual flight event that generates multiple complaints from a large group of people, a bad weather day or change in the weather, or a new homeowner that did not notice the flight paths before they purchased their home. Worth mentioning in the Monthly Noise Report for May 2015 is that PublicVue, the online public accessible flight tracking and noise complaint filing option was launched on 4/30/2015.

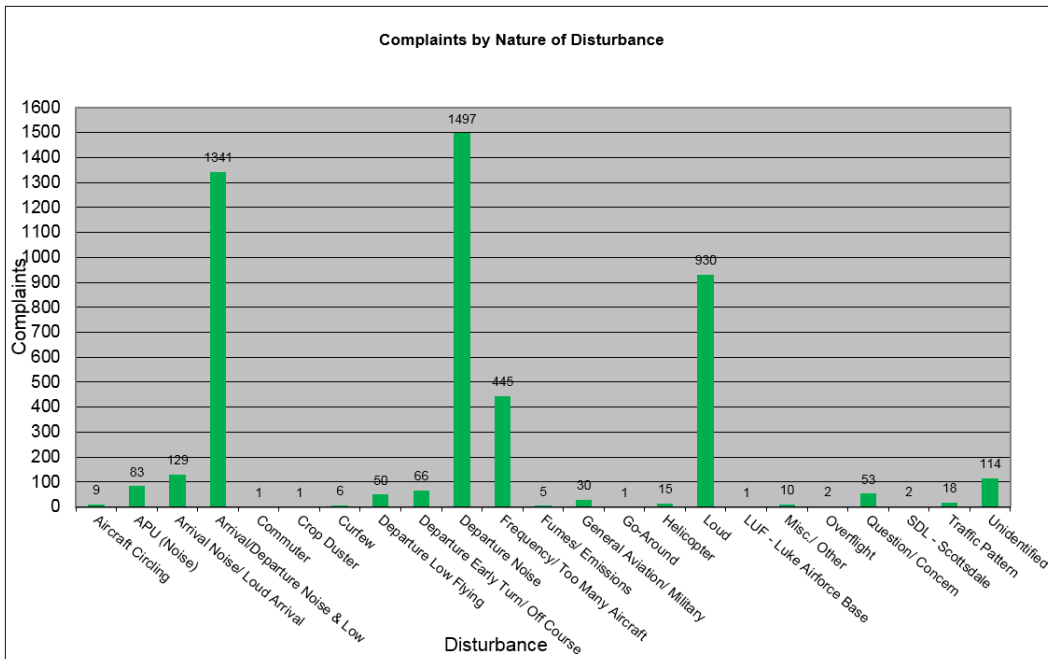
Complaint Statistics

	May-14		May-15	
	Households	Complaints	Households	Complaints
PHX- Sky Harbor	2	2	450	4722
DVT- Deer Valley	4	4	10	35
GYR- Goodyear	0	0	4	4
Totals	6	6	464	4761

Complaints by Jurisdiction

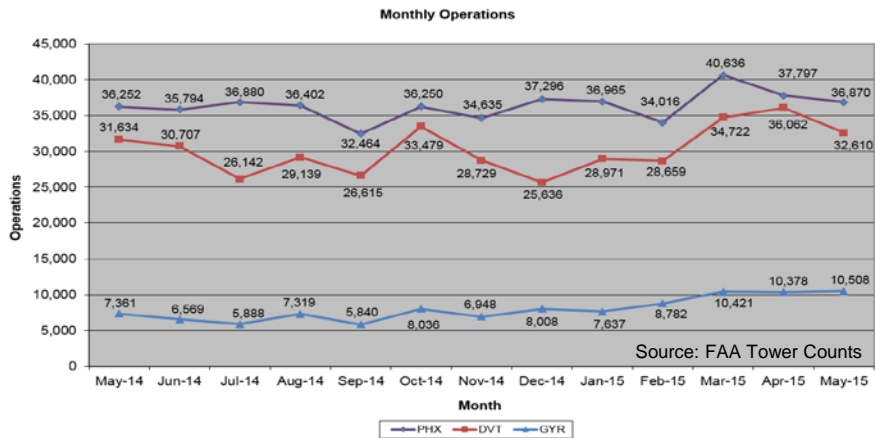


Complaints by Nature of Disturbance



Airport Operations

Aircraft operations generally fluctuate due to seasonal and passenger demand. The graphic below depicts operation totals at Phoenix Sky Harbor International Airport (PHX), Phoenix Deer Valley Airport (DVT) and Phoenix Goodyear Airport (GYR). Examples of peak travel times are spring break, major sporting events, the end of the school year and winter holidays.

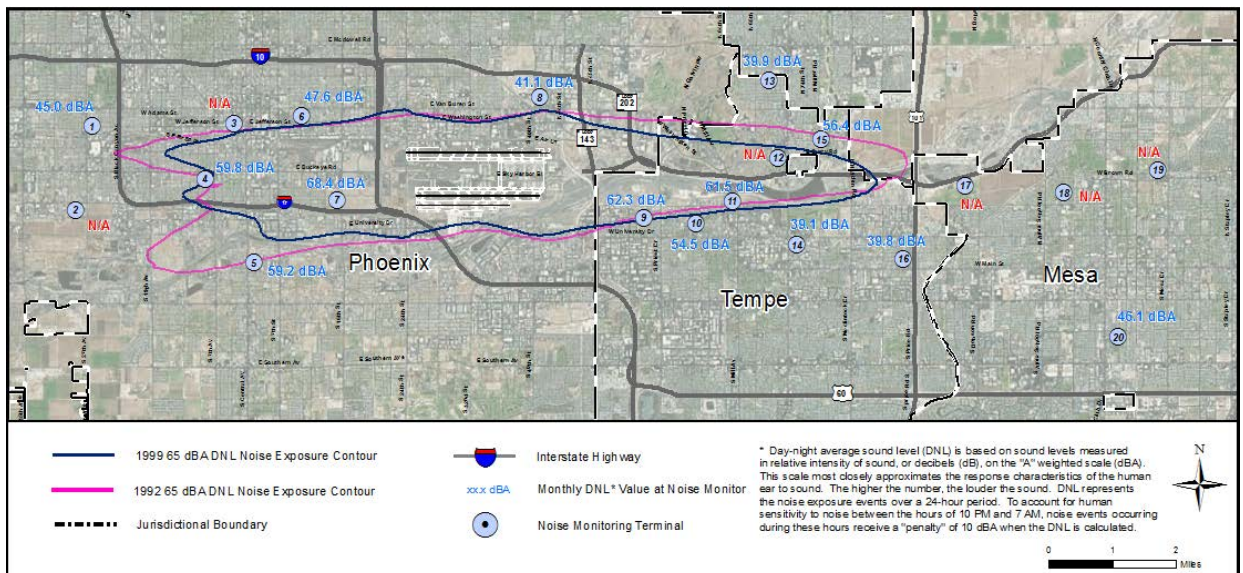


Noise Monitoring Sites

Noise Monitors: PHX has 20 noise monitors in the communities surrounding the Airport. These are located underneath the arrival and departure paths and in areas close to the Airport’s noise contours.

The monitors record aircraft noise events on a continual basis which then are correlated with actual flight data from the FAA. Noise Office staff can then associate noise complaints to aircraft operations and any noise events correlated with those flights. The Noise Office also monitors changes in monthly and annual noise readings at each location.

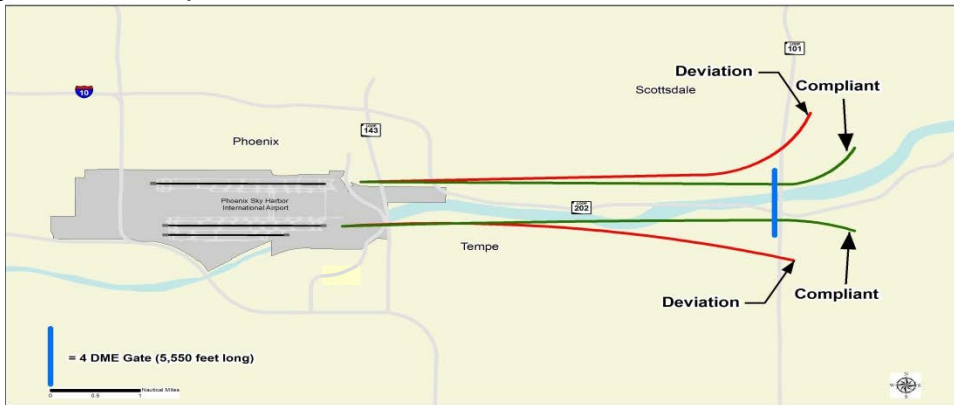
On the whole, aircraft related noise is on a decline from historical levels when older aircraft were operating at Phoenix Sky Harbor International Airport.



Note: Noise Monitoring Sites with an "N/A" may be due to maintenance being performed at or around the site which may be out of the control of the Aviation Department. The Noise Office is working to ensure all sites are operational.

Fly Friendly Procedures

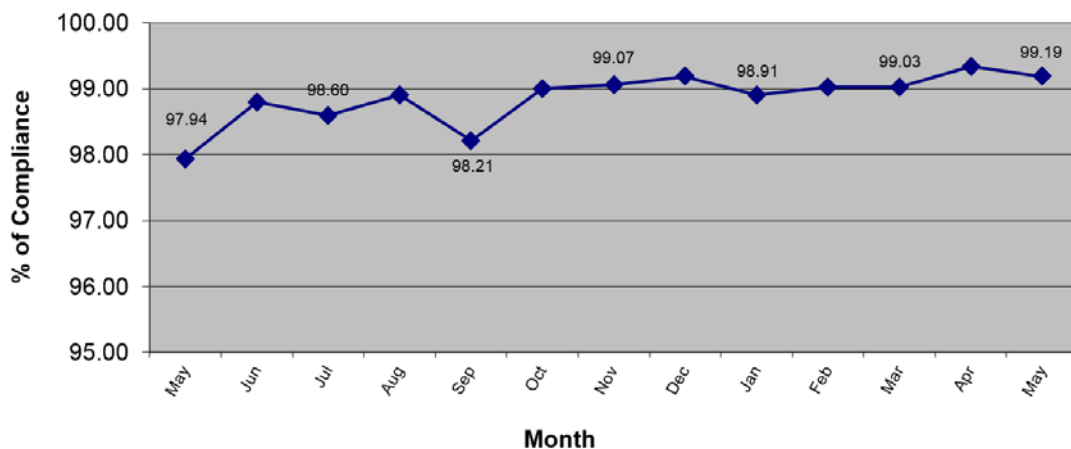
4 DME: The 4 DME (Distance Measuring Equipment) departure procedure directs jet propelled aircraft departing to the east to travel generally along the Salt River for approximately 5 miles from the airport before turning. In the event that an aircraft deviates from the 4 DME departure procedure, Noise Office staff will contact the carrier to determine the reason for the deviation and encourage future compliance.



May 2015 4 DME compliance rate: 99.19%

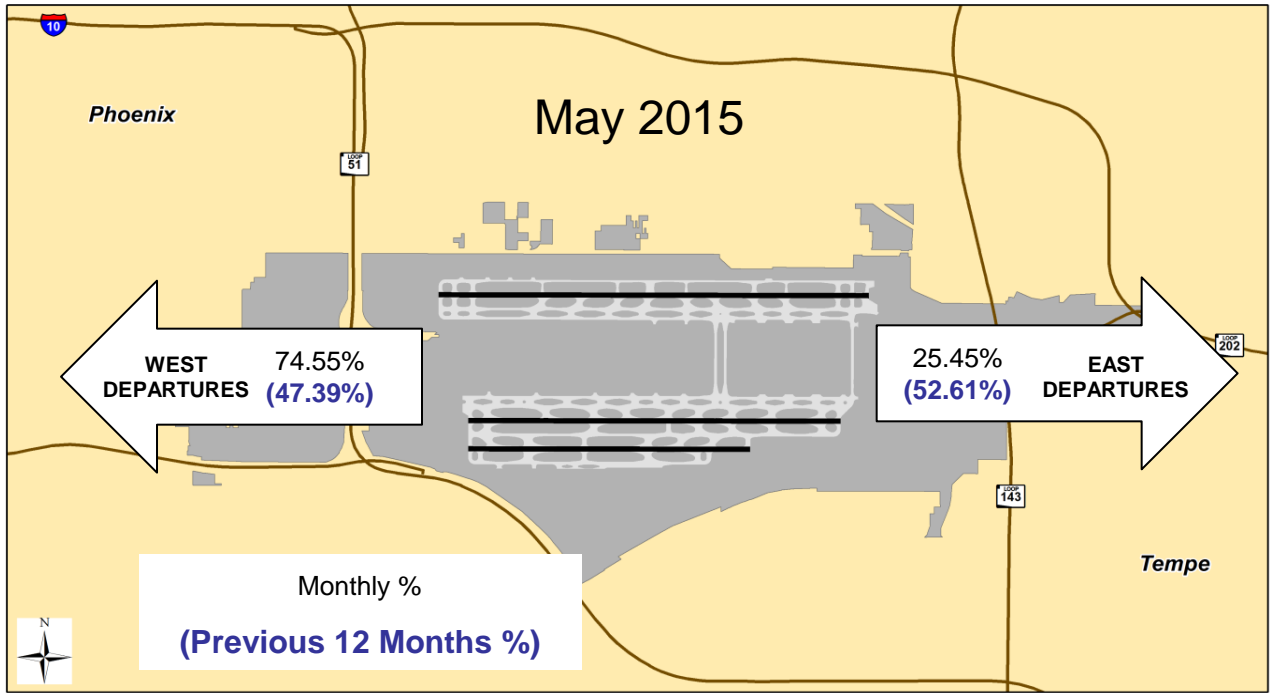
May 2015 4 DME Deviations			
Operators with 75 or more jet flights to the east shown			
Airline Name	Deviations	Total Departures to the East	% Compliance
American Airlines	5	1,711	99.71
Southwest Airline	6	1,216	99.51
SkyWest Airlines	2	403	99.51
Delta Airlines	1	179	99.44
United Airlines	2	184	98.91
General Aviation	12	91	86.81

Monthly Compliance 4 DME Procedure

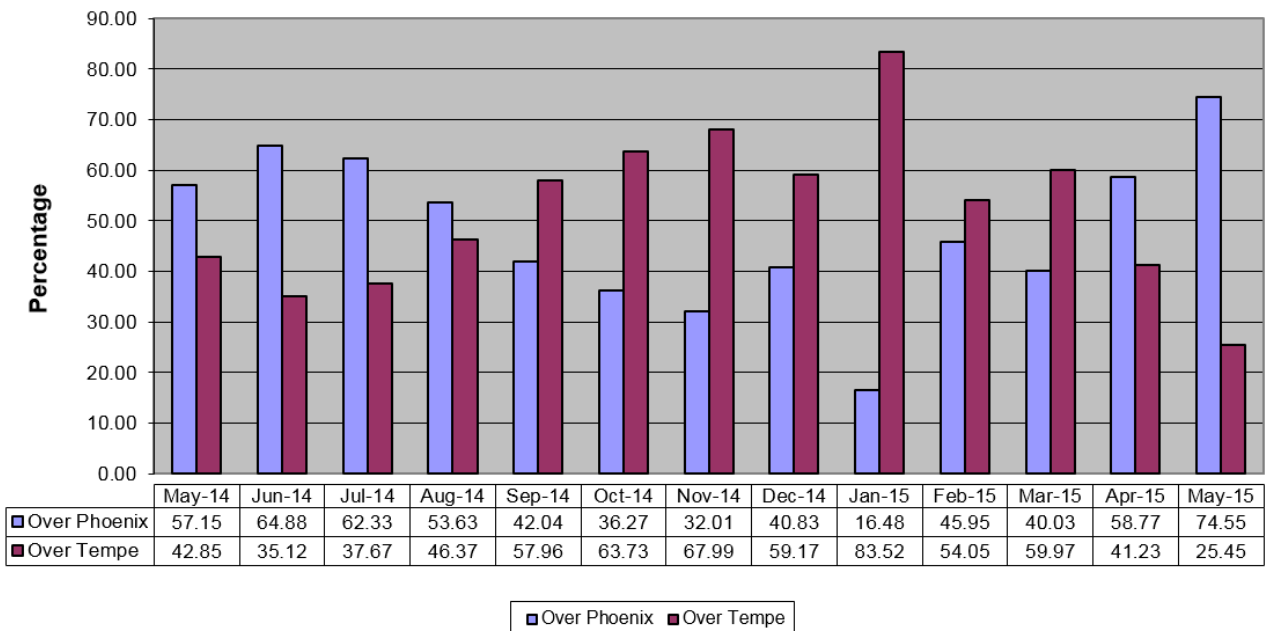


Fly Friendly Procedures Continued

Equalization: Phoenix Sky Harbor International Airport has a goal to equalize the amount of aircraft departures between the east and west over an annualized period. Monthly equalization data is shared with the FAA to help meet this goal. Because aircraft need to fly into the wind for added lift, there are times when weather can cause longer periods of flow in one direction versus the other.



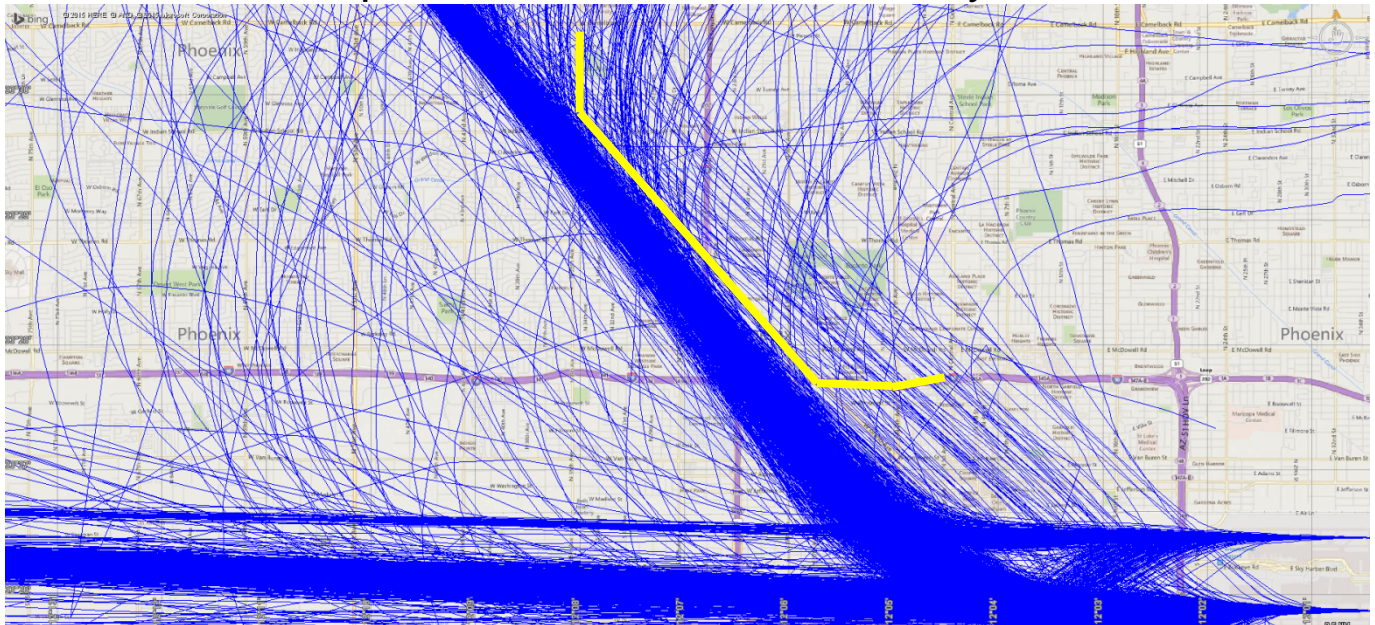
Annual Flow Equalization



“Early Turns” - Grand Avenue Month of May 2015

The graphic and table presented below was generated by the City of Phoenix’s Noise Information Office and is intended for display purposes only. The criteria used to gather and display the information is the interpretation of the Noise Office. On November 14, 2014 the FAA instructed PHX air traffic controllers to not issue early turns to aircraft unless doing so for safety purposes. The “early turns” captured below are reported to the FAA and respective airlines for analysis and corrective action as appropriate. The coordinate based “TWSND” waypoint (not depicted on map) is approximately located at the intersection of Grand Avenue and West Bethany Home Road and is a fly-by waypoint. The map below does not include flight paths that were removed because of stormy weather from approximately 8:30 pm to 10:30 pm on May 15.

Map of Grand Avenue and “Early Turns”



“Early Turns” - Grand Avenue 2015	
Counts derived from subjective analysis and subject to change	
Month	Counts
January	71
February	40
March	69
April	71
May	154
June	-
July	-
August	-
September	-
October	-
November	-
December	-
Year To Date	405

“Early Turns” - Grand Avenue Month of May 2015 Continued May “Early Turns” Information Table

Operation Time	Type	Flight	Aircraft	Destination
2015-05-31 00:17:16	Commercial	AAL1645	B738	ORD
2015-05-15 15:10:20	Commercial	AAL1712	A320	PHL
2015-05-04 15:21:24	Commercial	AAL1826	A321	LAS
2015-05-08 07:55:39	Commercial	AAL1856	B752	PHL
2015-05-22 12:40:58	Commercial	AAL1898	A321	DEN
2015-05-08 03:04:13	Commercial	AAL1905	A321	CLT
2015-05-17 02:03:42	Commercial	AAL1905	A321	CLT
2015-05-15 20:23:23	Commercial	AAL1949	A319	GEG
2015-05-28 23:24:17	Commercial	AAL2020	A321	CLT
2015-05-04 22:47:21	Commercial	AAL2026	A321	PHL
2015-05-02 01:32:19	Commercial	AAL2074	A321	CLT
2015-05-04 00:39:37	Commercial	AAL2216	B738	MIA
2015-05-07 17:08:29	Commercial	AAL409	A321	PDX
2015-05-10 16:26:28	Commercial	AAL420	A319	CLE
2015-05-22 22:09:58	Commercial	AAL442	A321	MCO
2015-05-15 20:42:31	Commercial	AAL449	A320	BOI
2015-05-07 17:00:34	Commercial	AAL456	A321	SLC
2015-05-15 15:11:59	Commercial	AAL474	A319	MSP
2015-05-22 22:04:17	Commercial	AAL496	A320	DEN
2015-05-15 20:21:59	Commercial	AAL528	A319	RNO
2015-05-05 19:01:21	Commercial	AAL530	A319	OMA
2015-05-15 15:51:48	Commercial	AAL562	A320	BOS
2015-05-22 12:38:59	Commercial	AAL564	A319	MCI
2015-05-23 16:50:37	Commercial	AAL599	A319	SJC
2015-05-07 16:11:15	Commercial	AAL618	A319	BWI
2015-05-14 16:14:30	Commercial	AAL618	A319	BWI
2015-05-15 20:20:40	Commercial	AAL627	A319	OAK
2015-05-31 21:46:14	Commercial	AAL632	A321	JFK
2015-05-15 20:32:02	Commercial	AAL640	A321	LAX
2015-05-09 00:29:12	Commercial	AJT453	B762	YMX
2015-05-08 06:08:03	Commercial	ASA631	B738	SEA
2015-05-29 15:12:22	Commercial	ASA633	B739	SEA
2015-05-22 12:36:22	Commercial	ASH5590	CRJ9	ABQ
2015-05-15 20:19:10	Commercial	ASH5595	CRJ9	BUR
2015-05-25 18:59:21	Commercial	ASH5632	CRJ9	ABQ
2015-05-27 21:52:43	Commercial	ASH5650	CRJ9	ABQ
2015-05-24 07:14:41	Commercial	DAL1492	A320	MSP
2015-05-18 11:29:18	Commercial	DAL171	MD90	MSP
2015-05-22 11:30:27	Commercial	DAL171	MD90	MSP
2015-05-10 09:24:31	Commercial	DAL2222	MD90	MSP
2015-05-19 09:47:35	Commercial	DAL2222	MD90	MSP
2015-05-23 09:32:21	Commercial	DAL2222	MD90	MSP
2015-05-16 11:40:46	Commercial	DAL2405	B752	JFK
2015-05-07 16:32:41	Commercial	DAL899	MD90	MSP
2015-05-15 16:23:10	Commercial	DAL899	MD90	MSP
2015-05-15 18:48:46	Commercial	DAL972	B739	SLC
2015-05-16 07:53:35	Commercial	EJA147	GLEX	SDL
2015-05-28 21:27:12	Privately Registered	EJM840	LJ45	MDW
2015-05-15 05:17:01	Commercial	FFT748	A319	DEN
2015-05-22 22:18:41	Commercial	JBU602	A320	BOS
2015-05-18 16:08:09	Privately Registered	N212JA	LJ60	PVU

“Early Turns” - Grand Avenue Month of May 2015 Continued May “Early Turns” Information Table

2015-05-13 16:34:33	Privately Registered	N336MA	C550	SDL
2015-05-09 14:53:33	Commercial	N43MF	LJ35	ABQ
2015-05-27 19:49:20	Privately Registered	N469MW	GALX	SDL
2015-05-07 00:15:48	Privately Registered	N480ME	LJ31	SDL
2015-05-28 18:38:56	Privately Registered	N492QS	GLF4	SDL
2015-05-24 11:40:43	Privately Registered	N499BS	LJ25	SDL
2015-05-14 19:36:12	Privately Registered	N542LM	LJ35	HIO
2015-05-05 14:18:52	Privately Registered	N66BE	C525	PVU
2015-05-07 05:42:30	Privately Registered	N711WG	C525	STJ
2015-05-07 08:18:46	Privately Registered	N75WP	C560	SFO
2015-05-14 14:53:11	Privately Registered	N800DT	C525	SDL
2015-05-21 16:27:35	Privately Registered	N888FC	F2TH	SJC
2015-05-14 10:14:04	Privately Registered	N929SS	PRM1	SLN
2015-05-28 22:14:26	Privately Registered	N991AL	LJ35	LNK
2015-05-04 01:10:53	Commercial	NKS972	A320	DFW
2015-05-08 17:18:59	Commercial	OPT454	BE40	SDL
2015-05-05 20:50:01	Privately Registered	PFT574	C560	IDA
2015-05-22 18:12:19	Commercial	SCX610	B738	MSP
2015-05-01 15:30:34	Commercial	SKW212J	CRJ9	ABQ
2015-05-04 15:25:14	Commercial	SKW212J	CRJ9	PHX
2015-05-14 09:09:43	Commercial	SKW2747	CRJ2	ABQ
2015-05-22 23:13:34	Commercial	SKW2760	CRJ2	FLG
2015-05-28 15:11:18	Commercial	SKW2764	CRJ2	GJT
2015-05-08 21:48:21	Commercial	SKW2776	CRJ2	DRO
2015-05-22 22:06:21	Commercial	SKW2776	CRJ2	DRO
2015-05-07 20:10:44	Commercial	SKW2781	CRJ2	MRY
2015-05-15 20:30:25	Commercial	SKW2781	CRJ2	MRY
2015-05-08 20:13:31	Commercial	SKW2783	CRJ2	FLG
2015-05-15 20:34:47	Commercial	SKW2786	CRJ2	BFL
2015-05-15 20:38:24	Commercial	SKW2788	CRJ9	SBA
2015-05-15 20:17:41	Commercial	SKW2795	CRJ9	SAT
2015-05-14 23:00:38	Commercial	SKW2803	CRJ2	FLG
2015-05-08 16:49:43	Commercial	SKW4503	CRJ9	SLC
2015-05-16 07:23:51	Commercial	SKW4704	CRJ7	SEA
2015-05-02 11:01:44	Commercial	SKW4786	CRJ9	SEA
2015-05-04 15:14:57	Commercial	SKW4795	CRJ7	SEA
2015-05-31 15:02:40	Commercial	SKW4795	CRJ7	SEA
2015-05-15 16:09:51	Privately Registered	SLH1	C560	DBQ
2015-05-05 12:05:27	Commercial	SWA1080	B737	MKE
2015-05-10 19:52:36	Commercial	SWA1084	B737	MDW
2015-05-15 20:00:30	Commercial	SWA1084	B737	MDW
2015-05-23 06:57:19	Commercial	SWA1342	B738	MDW
2015-05-16 07:44:01	Commercial	SWA1378	B733	ABQ
2015-05-16 06:21:55	Commercial	SWA1942	B737	DEN
2015-05-02 10:26:40	Commercial	SWA2319	B738	BUF
2015-05-25 18:41:45	Commercial	SWA2320	B737	DTW
2015-05-15 15:16:53	Commercial	SWA250	B737	MCI
2015-05-08 16:44:28	Commercial	SWA2677	B737	ABQ
2015-05-10 16:47:17	Commercial	SWA2677	B737	ABQ
2015-05-13 16:57:48	Commercial	SWA2677	B737	ABQ
2015-05-15 16:35:30	Commercial	SWA2694	B737	PDX

“Early Turns” - Grand Avenue Month of May 2015 Continued May “Early Turns” Information Table

2015-05-07 10:05:49	Commercial	SWA2699	B737	ABQ
2015-05-08 10:04:13	Commercial	SWA2699	B737	ABQ
2015-05-16 09:47:41	Commercial	SWA2715	B738	MKE
2015-05-15 20:26:26	Commercial	SWA279	B737	SAT
2015-05-07 16:06:18	Commercial	SWA2798	B733	LAS
2015-05-15 20:16:04	Commercial	SWA282	B737	BNA
2015-05-04 21:27:17	Commercial	SWA3217	B733	SLC
2015-05-15 20:36:55	Commercial	SWA3316	B738	MCI
2015-05-22 12:54:57	Commercial	SWA3661	B737	MDW
2015-05-21 20:26:52	Commercial	SWA3678	B733	DEN
2015-05-27 19:19:16	Commercial	SWA3739	B738	DEN
2015-05-15 20:40:31	Commercial	SWA3947	B737	SFO
2015-05-04 19:46:46	Commercial	SWA4025	B737	SMF
2015-05-15 20:24:52	Commercial	SWA4025	B737	SMF
2015-05-22 19:41:09	Commercial	SWA4025	B737	SMF
2015-05-15 23:34:52	Commercial	SWA4460	B737	MSP
2015-05-15 05:51:42	Commercial	SWA4478	B737	MKE
2015-05-06 08:24:13	Commercial	SWA4588	B737	BUR
2015-05-04 15:23:17	Commercial	SWA498	B737	SMF
2015-05-04 16:55:22	Commercial	SWA563	B737	CMH
2015-05-07 16:22:32	Commercial	SWA563	B737	CMH
2015-05-08 16:45:37	Commercial	SWA563	B737	CMH
2015-05-14 16:32:15	Commercial	SWA563	B737	CMH
2015-05-04 14:58:28	Commercial	SWA596	B738	BWI
2015-05-04 21:19:52	Commercial	SWA641	B737	SEA
2015-05-19 15:26:15	Commercial	SWA672	B738	MDW
2015-05-04 20:59:53	Commercial	SWA709	B737	SAN
2015-05-22 22:20:20	Commercial	SWA729	B737	DEN
2015-05-26 22:19:52	Commercial	SWA729	B737	DEN
2015-05-27 22:28:50	Commercial	SWA729	B737	DEN
2015-05-06 18:54:08	Commercial	SWA738	B738	MDW
2015-05-10 20:13:37	Commercial	SWA738	B738	MDW
2015-05-20 19:19:40	Commercial	SWA738	B738	MDW
2015-05-06 06:52:04	Commercial	SWA798	B737	ABQ
2015-05-08 06:49:42	Commercial	SWA798	B737	ABQ
2015-05-14 18:38:27	Commercial	SWA817	B738	MKE
2015-05-15 18:47:01	Commercial	SWA817	B738	MKE
2015-05-29 18:45:07	Commercial	SWA817	B738	MKE
2015-05-01 23:02:16	Commercial	SWA839	B737	ABQ
2015-05-07 21:21:38	Commercial	SWA839	B737	ABQ
2015-05-10 21:03:06	Commercial	SWA839	B733	ABQ
2015-05-15 16:08:22	Commercial	SWA869	B737	SEA
2015-05-15 20:33:30	Commercial	SWA912	B733	LAS
2015-05-19 14:13:34	Commercial	SWA945	B733	DEN
2015-05-18 14:25:51	Commercial	UAL1511	B738	ORD
2015-05-16 11:31:45	Commercial	UAL1580	B739	ORD
2015-05-04 14:41:37	Commercial	UAL626	A319	ORD
2015-05-07 11:50:32	Commercial	UAL701	A319	EWR
2015-05-08 11:49:19	Commercial	UAL701	A319	EWR
2015-05-01 00:00:03	Privately Registered	UNKNOWN	K35R	UNK
2015-05-08 04:44:03	Commercial	UPS850	B763	ONT
2015-05-20 19:24:54	Privately Registered	XOJ753	C750	SDL